



**TYPICAL**

**GC0605F-D2T1**  
**GC0605F-D2T3**

**Single Needle Compound Feed Lockstitch  
Sewing Machine With Undertrimmer**

**OPERATION INSTRUCTION / PARTS MANUAL**

- Please don't adjust and repair the machine by non-professionals, except adjusting stitch.
- Specifications subject to change without notice

**TYPICAL SEWING MACHINE WANPING MACHINERY CO.,LTD.**

---

ADD: WANPING TOWN, WUJIANG CITY, JIANGSU

PROVINCE, CHINA

TEL: +86-512-63391278

FAX: +86-512-63391371

POST. CODE: 215223

[Http://www.typicalwpchina.com](http://www.typicalwpchina.com)

E-mail: [export@typicalwpchina.cn](mailto:export@typicalwpchina.cn)

## 1. Brief introduction

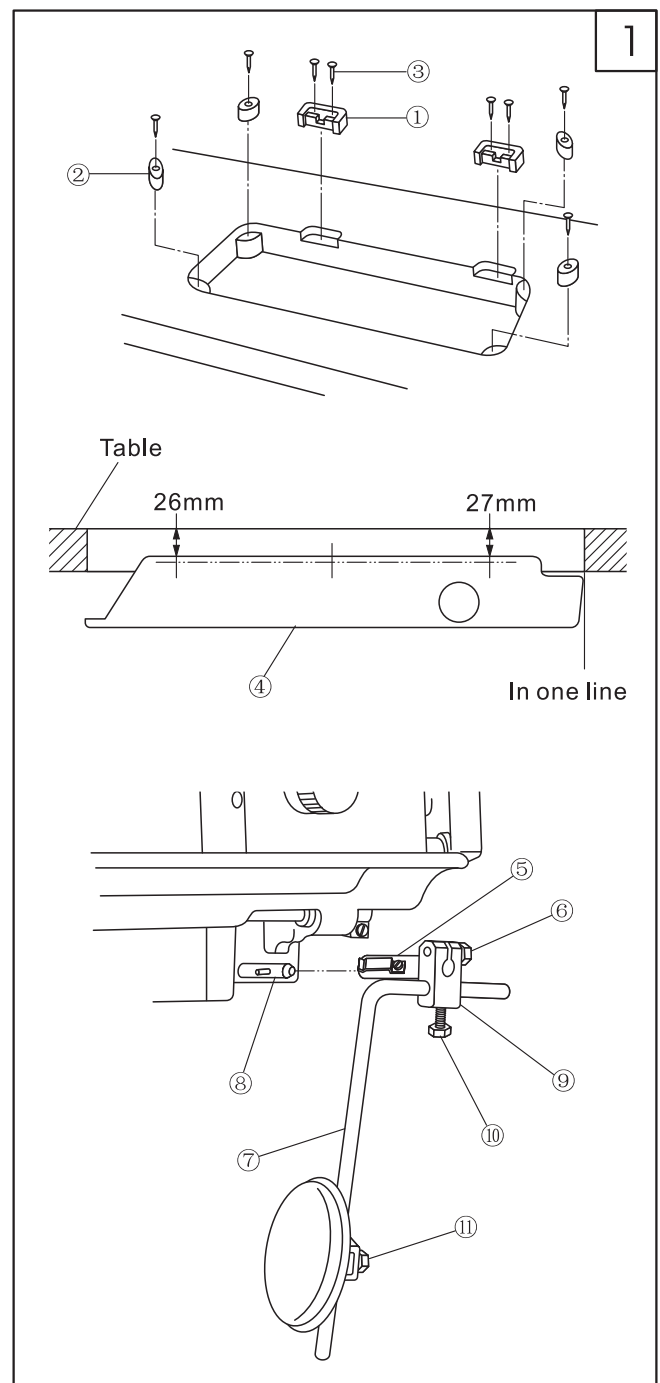
Machine adopts compound feed and special feeding mechanism, which can ensure smooth feeding, low noise, and beautiful stitch seam. It is constructed with slide link thread take-up, horizontal large rotating hook, and synchronized belt driving system. This machine is widely used in the factories of car seat, sofa, tarpaulins, bag, etc.

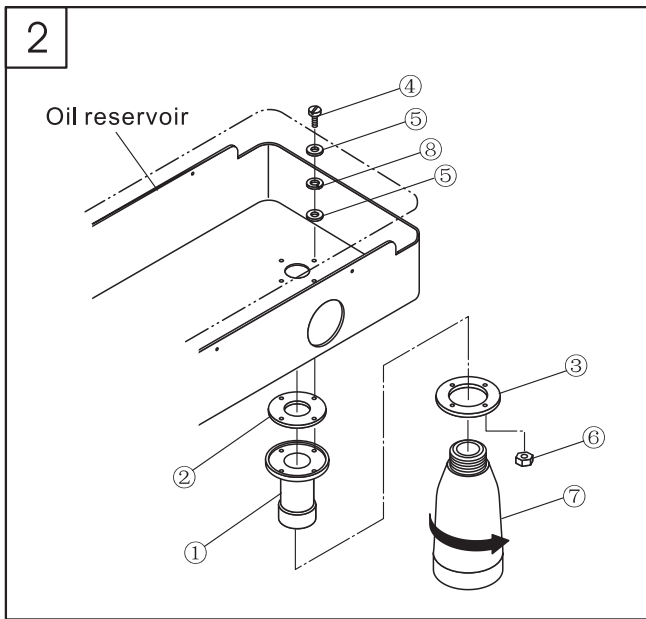
## 3. Installation (Fig.1)

- 1.Installation of the table connecting hook bracket and rubber cushion.  
Fix the connecting hook bracket ① and the rubber cushion ② on the table by screw ③.
- 2.Installing the oil reservoir.  
Set the oil reservoir ④ onto the table by six screws as shown in the Fig.1
- 3.Install the knee control connector ⑤, knee control lift crank ⑨ and bent bar ⑦ according to the direction of the knee control lift bar shaft ⑧.
- 4.Adjust the direction of part ⑥, ⑩, ⑪ by set screw.

## 2. Mian specifications

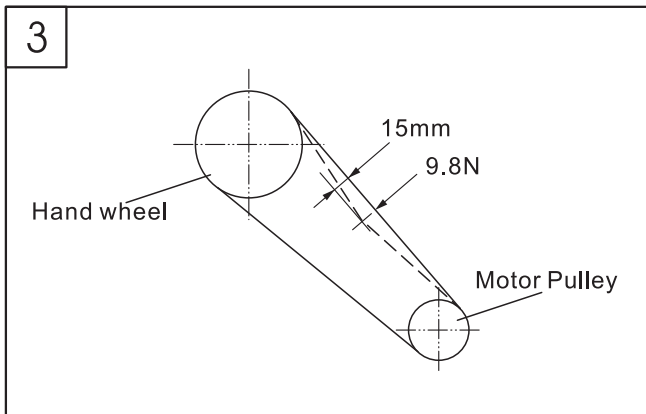
Application	Medium and heavy duty
Max.sewing speed	2500 spm
Max.stitch length	9mm
Needle bar stroke	36mm
Needle	DP*17 (Nm125-Nm180) standard Nm160 (23#)
Lubrication	Semi-lubrication
Hook	Large hook
Height of presser foot lift	9mm by hand, 16mm by knee
Motor	AC Servo motor





#### 4. Installing the oil box (Fig.2)

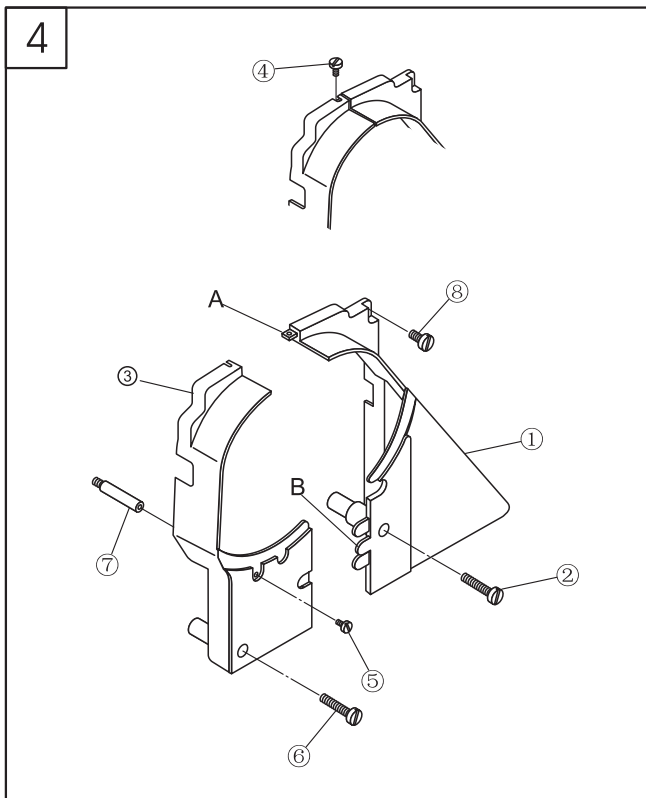
1. Install the bolt ①, oil seal ② and spacer ③ onto the oil reservoir, and then put the cushion 5 and spacer ⑧ into the set screw ④, then set it by nut ⑥.
2. Tighten the oil pot ⑦ onto the bolt ①.



#### 5. Adjusting the tension of the belt (Fig.3)

When adjusting the tension of the belt, please adjust the height of the motor, and press down the middle of the belt with the force of 9.8N. There should be a slack of 15mm.

**Note:** Please turn off the motor before adjustment.



#### 6. Installing the belt cover (Fig.4)

1. Tighten the column ⑦ into the screw hole on the machine head.
2. Install the belt cover (right) ① on the machine head by set screw ② and ⑧.
3. Connect the belt cover (left) ③ to the claw AB of the belt cover (right) ①.
4. Tighten the belt cover (left) ③ by set screws ④, ⑤ and ⑥.

**Note:** After installing the belt cover, make sure that the belt cover is not touch with the belt and hand wheel

## 7. Lubrication (Fig.5)

### 1.Face plate lubrication

- Loosen the face plate screw;
- Open the face plate ① in the direction of the arrow;
- Lubricate the place as the arrow shows every day;
- Close the face plate;
- Tighten the screw.

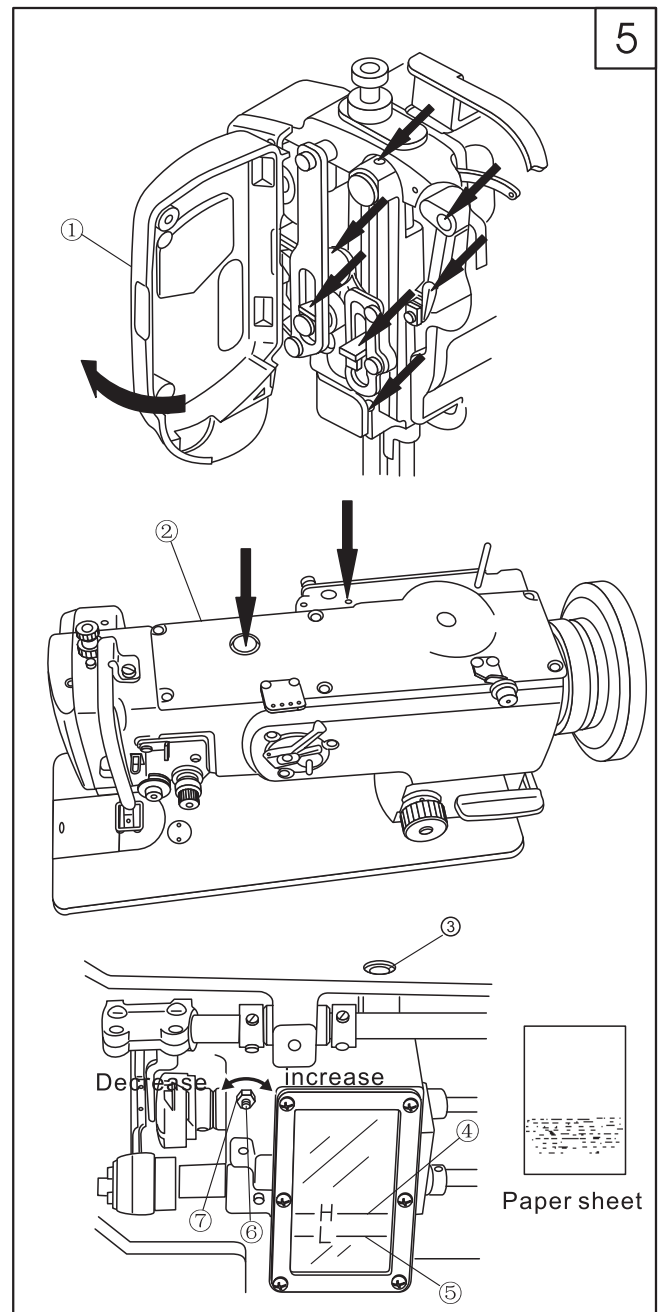
### 2.Machine body lubrication

- Lubricate the place as the arrows indicate every day;
- When run the machine for the first time or run it again after a long period of non-use, please oil the place as the arrows indicate. Besides, take down the top cover ②, then oil each felt and oil wick.

### 3.Rotating hook lubrication

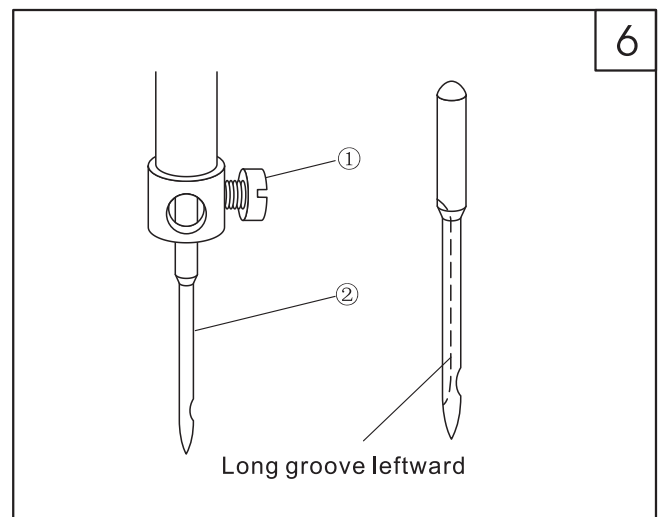
- Add the oil from oil hole ③ until it reaches the red line ④. Check it one time a day. If the the oil is under the red line ⑤, it should be refilled.
- When adjusting the oil amount of the rotating hook, loosen the nut ⑦, then adjust it by adjusting screw ⑥. Turn it rightward, the amount of the oil can be increased; on the contrary, the amount can be reduced.

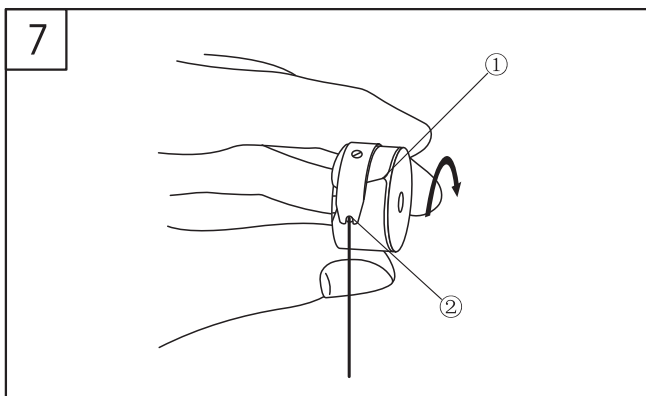
**Note:** Excess lubrication results in leaking.



## 8. Installing the needle (Fig.6)

- Turn the hand wheel to raise the needle bar to its highest position;
- Loosen the set screw ② and make the long groove of the needle ① toward leftward;
- Insert the needle into the bottom of the needle bar;
- Tighten the set screw ②.

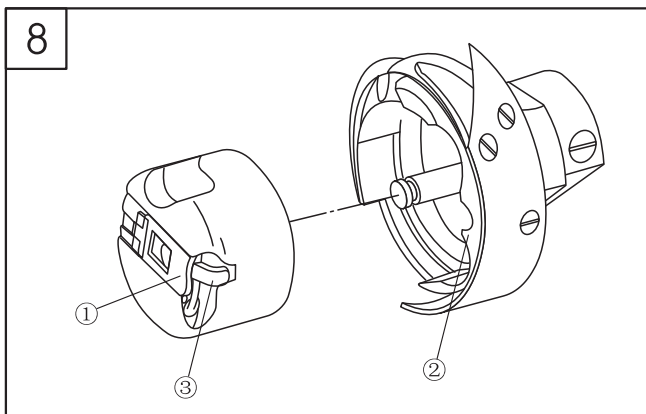




### 9. Threading the bobbin thread (Fig.7)

1.Insert the bobbin into the hook body, pass the thread through the thread hole ①, then pass down through the thread tension spring ②.

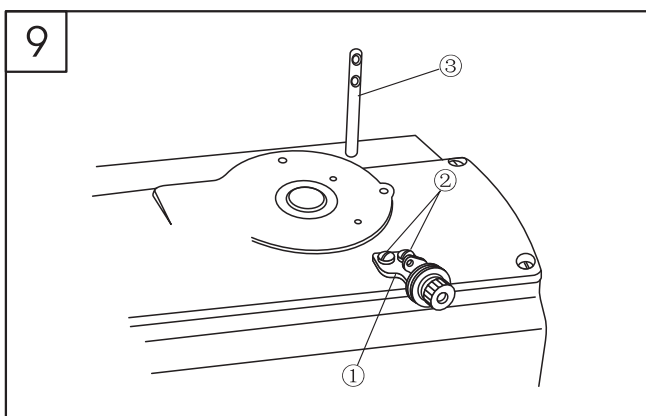
2.Draw the thread downward, then the bobbin will turn in the direction as the figure shows.



### 10. Installing the bobbin case (Fig.8)

1.When taking out the bobbin case body, open the gib ① and pull it off.

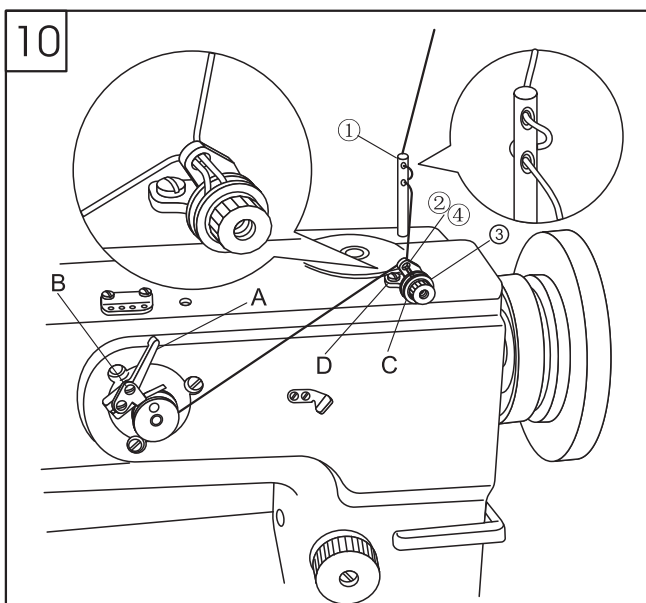
2.Align the rotating bobbin case with the rotating hook shaft and then insert it. Align the inside of the rotating hook ② and the latch ③, then install the bobbin case by pressing it until "crack" occurs.



### 11. Installing the winding guider (Fig.9)

1.Set the winding guider ① onto the top cover of the machine head by set screw ②.

2.Insert the bobbin thread guider ③ into the spool machine head.



### 12. Winding the bobbin thread (Fig.10)

1.Thread in numerical order from ① to ④, then wind the bobbin winder.

2.Press down the bar A.

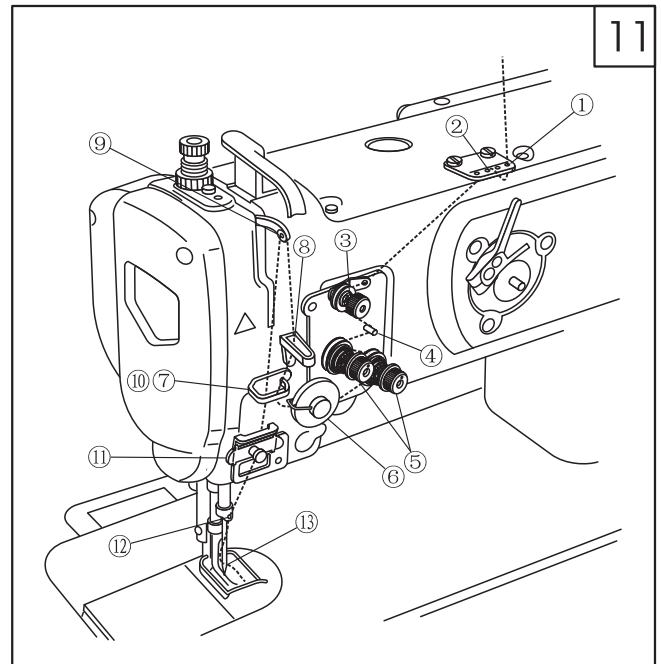
3.Loosen the set screw B and adjust the adjusting plate until the winding amount reaches the 80% of the outside diameter.

4.When the winding is not smooth, move the winding guider C forward and backward, then set it by set screw D.

5.After winding, the winding bar A will separate and stop automatically.

### 13. Threading (Fig11)

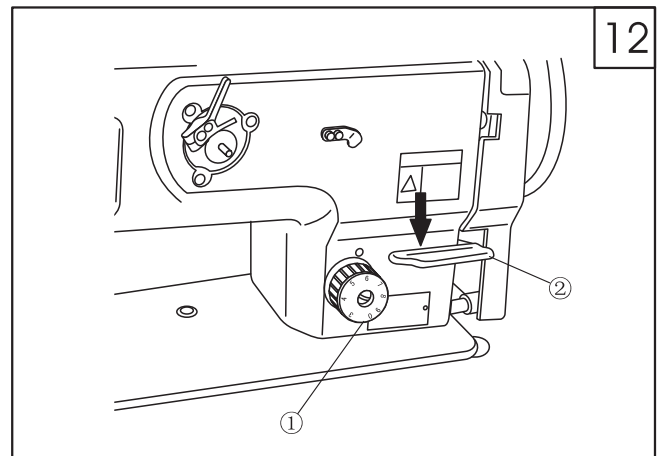
Thread in the order as shown in Fig.



### 14. Adjusting the stitch length (Fig.12)

Turn the stitch length dial plate ① leftward and rightward to make the marker align with the required figure.

Press down the reverse feed lever ② to start backward sewing, and release it to start normal sewing.



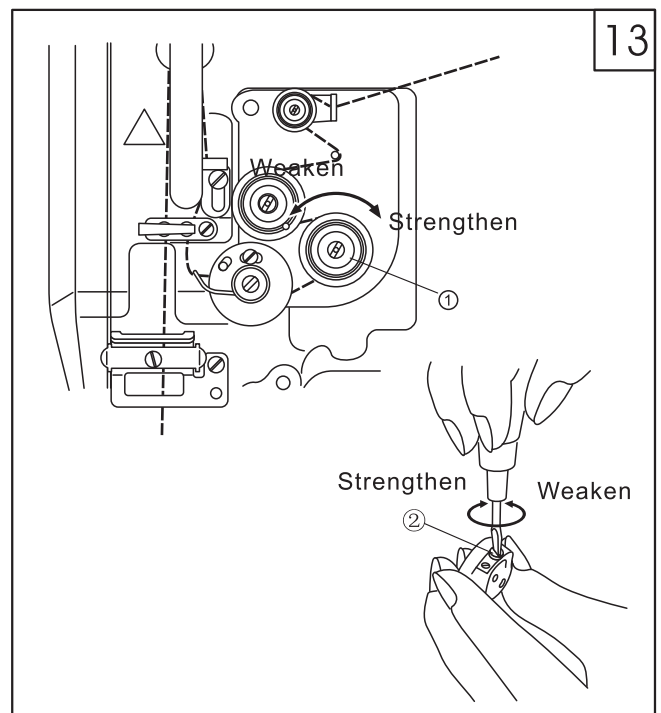
### 15. Adjusting the thread tension (Fig.13)

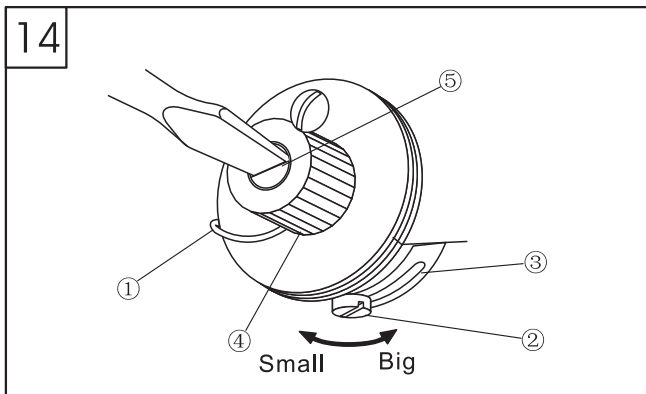
1. Adjusting the tension of the needle thread

Turn the nut ① clockwise to increase the tension of the needle thread; on the contrary, to reduce the tension of the needle thread.

2. Adjusting the tension of the bobbin thread.

Turn the screw ② clockwise to increase the tension of the bobbin thread, on the contrary, to reduce the tension of the bobbin thread.





### 16. Adjusting the thread take-up spring (Fig.14)

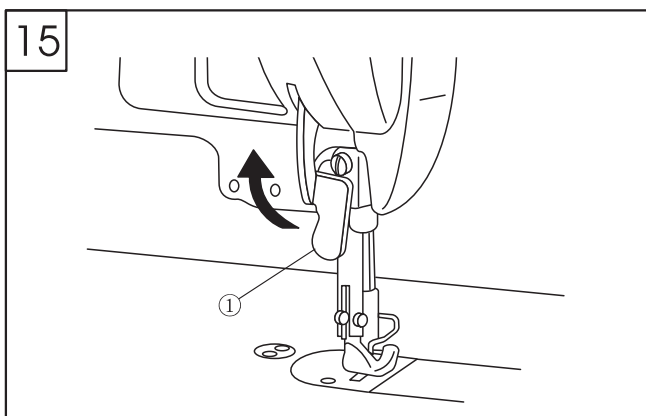
1.Changing the swing range of the thread take-up spring

a.Loosen the set screw ②, move the stopper ③ leftward and rightward, then adjust the thread take-up spring ①.

b.Move the stopper rightward to increase the swing range of the thread take-up spring; on the contrary, to reduce the swing range of the thread take-up spring.

2.Changing the tension of the thread take-up spring

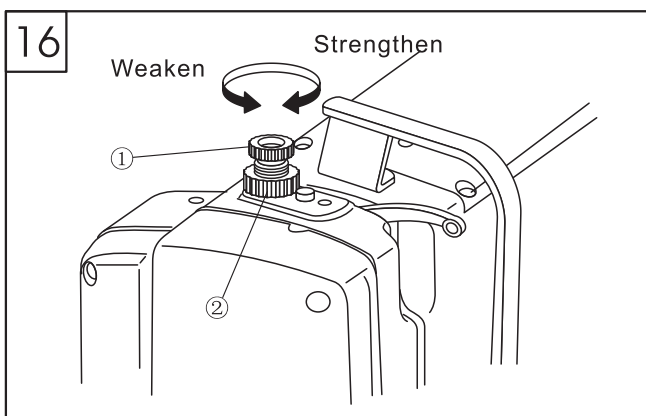
Loosen the nut ④, turn the spring shaft ⑤ counter-clockwise to increase the tension; turn it clockwise to reduce the tension.



### 17. Presser foot lifter (Fig.15)

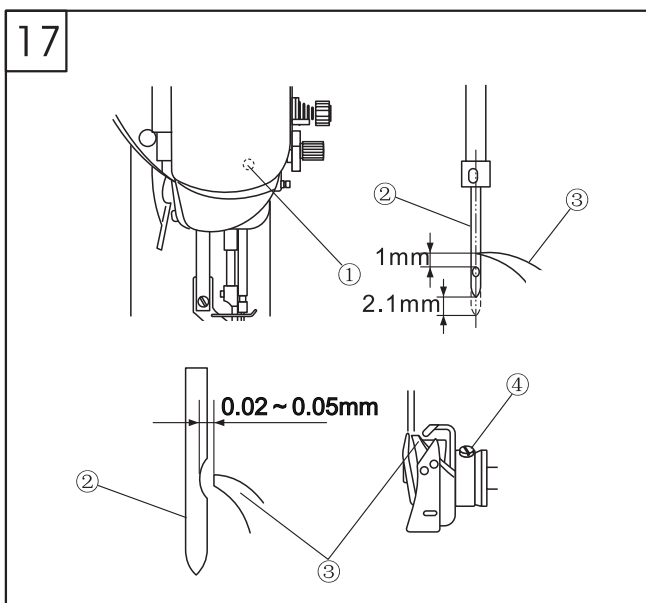
1.Stop the presser foot when it is lifted, lift the lifting bar ① in the direction of the arrow. When the presser foot is lifted by 9mm, then stop it.

2.When lowering the presser foot, put down the lifting bar ① to make the presser foot back to its original place.



### 18. Adjusting the pressure of the presser foot (Fig.16)

Turn the adjusting screw ① rightward to increase the pressure; turn it leftward to reduce the pressure. After adjustment, tighten the set nut ②.



### 19. Relationship between needle and rotating hook (Fig.17)

1.Adjust the stitch length dial to 0.

2.Turn the hand wheel to lift the needle bar from its lowest position by ②.1mm. loosen the screw ①, adjust the distance between up end of the eye of needle ② and rotating hook point 3 to 1mm, then tighten it.

3.Turn the hand wheel to lift the needle bar from its lowest position by 2.1mm. Loosen the two set screws ④, turn the rotating hook, align the rotating hook point ③ and the center of the needle ②, then tighten the two screws ④.

4.Loosen the two set screws ④, move the rotating hook leftward and rightward. Point align the rotating hook point ③ with the center of the needle ②, and adjust the clearance between rotating hook and needle to 0.02-0.05mm, then tighten the screw.

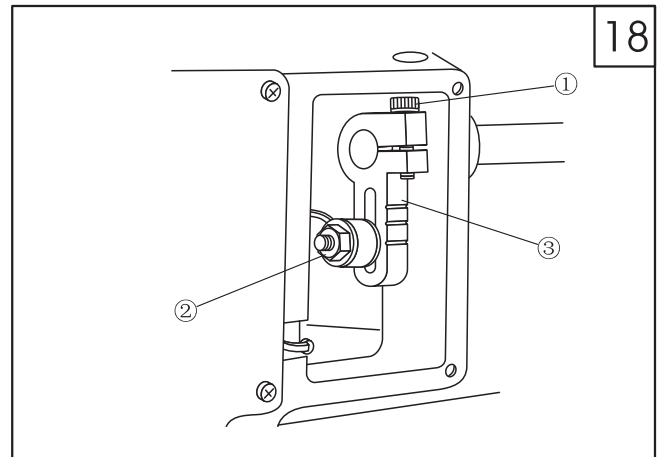


## 20. Adjusting the alternating amount of presser foot (Fig.18)

When the presser foot is alternating increasingly, adjust it upward in the range of the long hole of the top feed crank ③ ; when the presser foot is alternating decreasingly, adjust it downward, then tighten the nut ②.

When the lifting amount of the presser foot and walking foot is different, first align the bottom of the presser foot and walking foot with the surface of the needle plate, then loosen the set screw ①. Turn the hand wheel to the front, tighten screw ②, then the lifting amount of the presser foot is more than that of the walking presser foot. Turn the hand wheel reversingly, then the lifting amount of the walking foot is more than that of the presser foot.

Remove the right side of the window plate, then the top feed crank ③ can be observed.



## 21. Sewing speed list

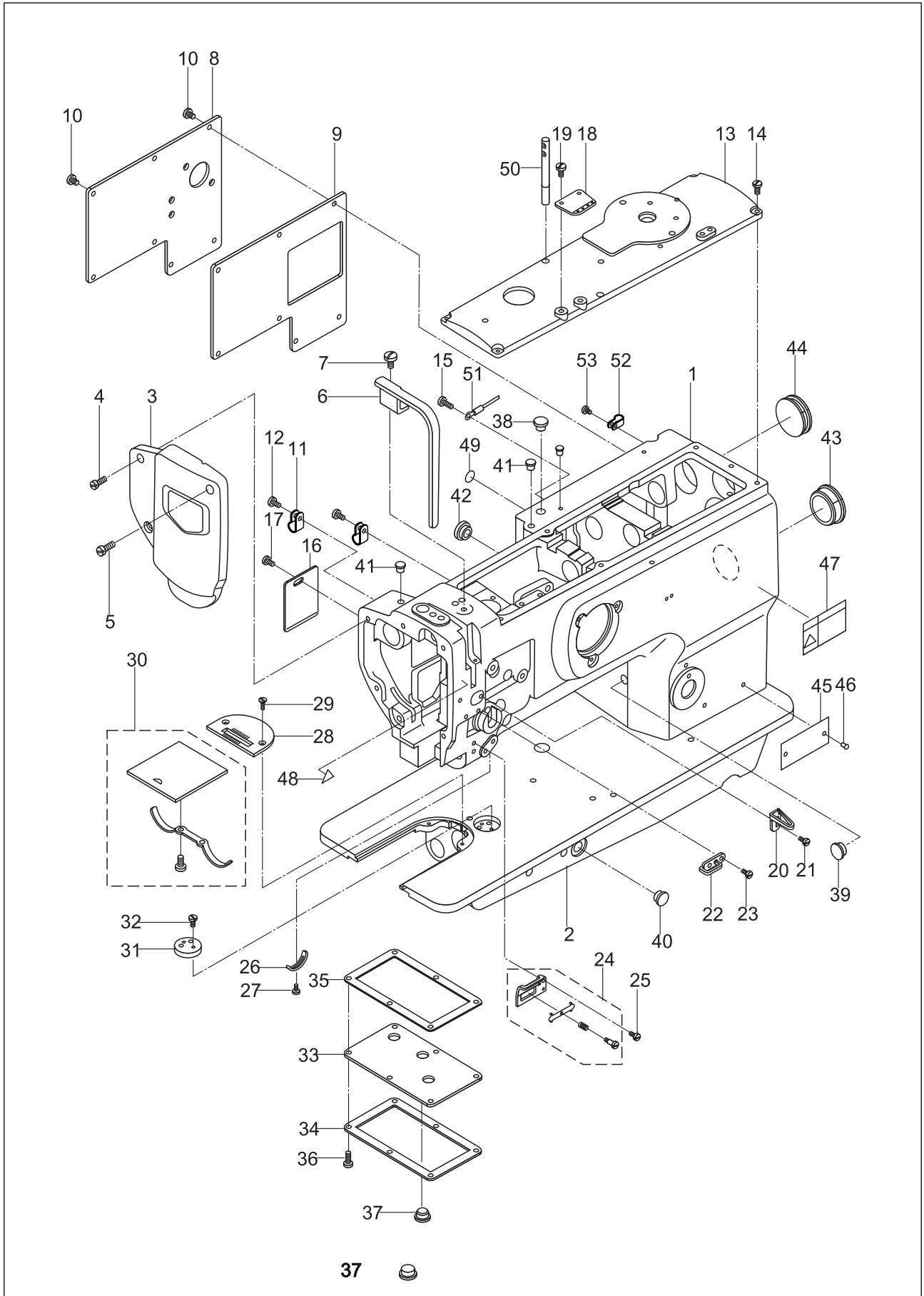
Alternating amount	Stitch less than 6mm	Stitch between 6mm-9mm
Less than 3mm	2500rpm	2000rpm
Between 3~4mm	2000rpm	2000rpm
Between 4~6.5mm	1600rpm	1600rpm

Set the sewing speed according to the different condition. Do not surpass the standard data.

## 22. Troubleshooting

Trouble	Possible cause	Remedy
1. Thread breaking (2-3mm thread left on the cloth)	<ol style="list-style-type: none"> <li>1. Damage on the rotating hook set groove of thread way, needle point, rotating hook point and needle plate.</li> <li>2. Too strong the needle thread tension</li> <li>3. Collision between needle and rotating hook.</li> <li>4. Too little the oil of the rotating hook</li> <li>5. Too weak the needle thread tension.</li> <li>6. Too strong the tension of the thread take-up spring</li> <li>7. Over fast or slow the timing between needle and rotating hook</li> </ol>	<ol style="list-style-type: none"> <li>1. Polish the damaged part with sand paper; rasp the middle rotating hook set groove with file.</li> <li>2. Weaken the needle thread tension.</li> <li>3. Refer to (19.Relationship between needle and rotating hook.)</li> <li>4. Adjust the oil amount (Refer to7. Lubrication)</li> <li>5. Increase the needle thread tension.</li> <li>6. Weaken the tension of the thread take-up spring.</li> <li>7. Refer to (19. Relationship between needle and rotating hook)</li> </ol>
2. Puckering	<ol style="list-style-type: none"> <li>1. Over fast or slow the timing between needle and rotating hook.</li> <li>2. Too weak the pressure of the presser foot.</li> <li>3. The clearance between the up end of the needle and the rotating hook is not right.</li> <li>4. Wrong needle.</li> </ol>	<ol style="list-style-type: none"> <li>1. Refer to (19. Relationship between needle and rotating hook).</li> <li>2. Tighten the presser foot adjusting screw.</li> <li>3. Refer to (19.Relationship between needle and rotating hook.)</li> <li>4. Replace the needle.</li> </ol>
3. Loose stitch	<ol style="list-style-type: none"> <li>1. Without threading the bobbin thread under the spring of the thread tension of the bobbin case.</li> <li>2. Bad work on thread way.</li> <li>3. No movement of bobbin.</li> <li>4. Too weak the bobbin thread tension.</li> <li>5. Too strong the bobbin thread tension.</li> <li>6. Damage of the needle point.</li> </ol>	<ol style="list-style-type: none"> <li>1. Refer to (9.Threading the bobbin thread)</li> <li>2. Rasp with sand paper or file.</li> <li>3. Replace the bobbin or rotating hook</li> <li>4. Increase the bobbin thread tension.</li> <li>5. Reduce the bobbin thread tension.</li> <li>6. Replace the needle.</li> </ol>

# 1. Arm and bed

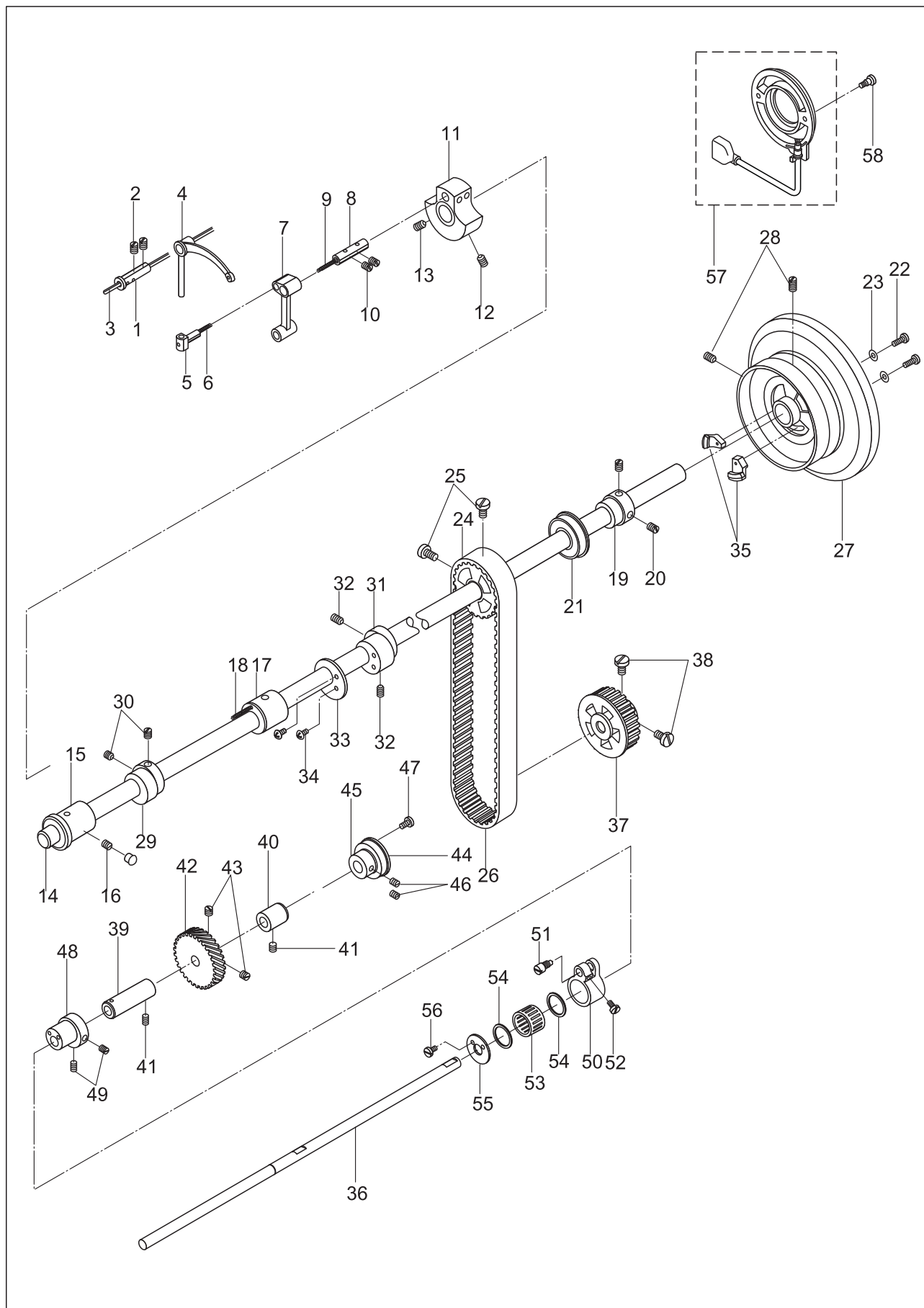


## 1. Arm and bed

NO.	Part Number	Name	Qt.	Remark
1	92WF2-001	Arm	1	
2	92WF2-002	Bed	1	
3	92WF2-003	Face plate assembly	1	
4	1WF5-039	Screw (1)	2	
5	37T2-210	Screw (2)	1	
6	92WF2-004	Safety guard	1	
7	13WF2-045	Screw	1	
8	92WF2-005	Side cover	1	
9	92WF2-006	Seal spacer	1	
10	1WF1-011	Screw	7	
11	92WF2-007	Wrie clamp	1	
12	92WF2-008	Screw	1	
13	92WF2-009	Upper cover	1	SM11/64"×40
14	1WF1-011	Screw	6	SM15/64"×28
15	1WF1-011	Scew	1	
16	92WF2-011	Small cover	1	SM15/64"×28
17	1WF1-011	Screw	1	
18	92WF2-012	Upper thread guide plate	1	
19	36WF5-003	Screw	2	SM11/64"×40
20	92WF2-013	Upper thread guide	1	
21	36WF1-016	Screw	1	SM11/64×40
22	92WF2-014	Middle thread guide	1	
23	1WF1-007	Screw	2	SM11/64"×40
24	92WF2-015	Lower thread guide assembly	1	
25	1WF1-007	Screw	1	
26	50WF2-022	Position plate	1	SM11/64"×40
27	1WF1-026	Screw	1	
28	92WF2-016	Needle plate	1	SM3/16"×32
29	36WF3-004	Screw	2	
30	008035C	Slide plate assembly	1	SM9/64"×40
31	92WF2-017	Clamp holder	1	
32	36T5-008E5	Screw	2	SM9/64"×40
33	92WF2-022	Oil screen	1	
34	92WF2-023	Presser plate	1	SM9/64"×40
35	92WF2-024	Seal spacer	1	
36	22T6-008D3	Screw	6	SM9/64"×40
37	92WF2-028	Rubber plug	3	
38	92WF2-028	Rubber plug	1	SM11/64"×40
39	92WF2-028	Rubber plug	1	
40	92WF2-028	Rubber plug	1	
41	92WF2-029	Rubber plug	2	SM11/64"×40
42	92WF2-030	Rubber plug	1	
43	92WF2-031	Rubber plug	1	
44	92WF2-032	Rubber plug	1	
45	92WF2-033	Trade mark (in Chinese)	1	
	92WF2-034	Trade mark (in English)	1	
46	92WF2-040	Rivet	2	
47	1KT1-005	Safety caution labeled	1	
48	59WF1-010	Safety caution labeled	1	
49	21WF4-050	Ground wire mark	1	
50	92WF2-037	Upper thread guide bar	1	
51	119WF8-017	Earth wire	1	
52	119WF2-008	Wire clamp	1	
53	22WF5-027	Screw	1	

GB827-86

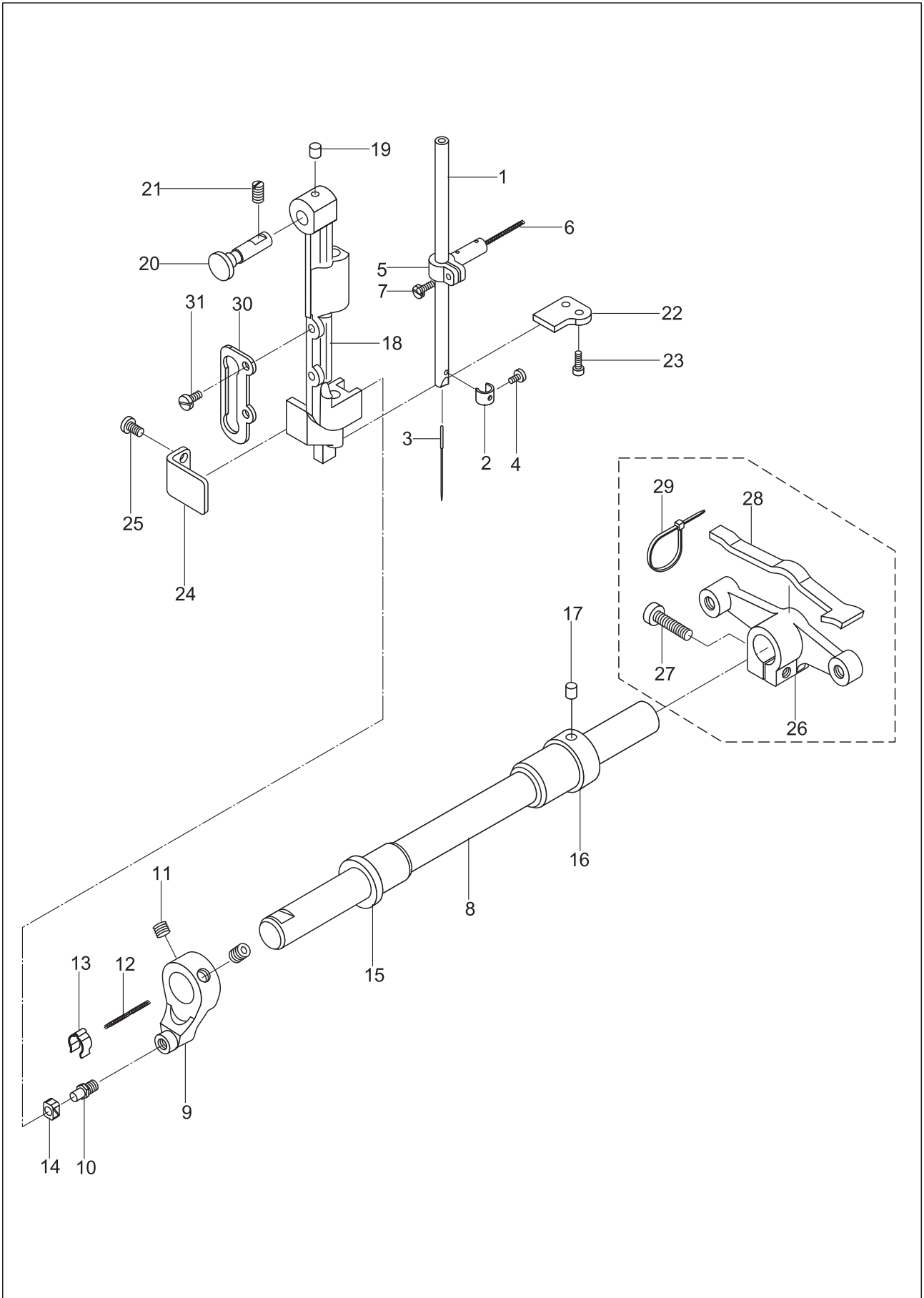
## 2.Upper shaft and thread take-up mechanism



## 2.Upper shaft and thread take-up mechanism

NO.	Part Number	Name	Qt.	Remark
1	16WF1-010	Thread take-up pin shaft	1	
2	1WF5-019	Screw	2	
3		Oil wick	1	
4	92WF1-004	Thread take-up lever	1	
5	92WF1-005	Slide block	1	
6		Oil wick	1	
7	92WF1-006	Needle bar link	1	
8	50WF1-008	Needle bar crank pin	1	
9		Oil wick	1	
10	1WF5-019	Screw	2	103530
11	92WF1-007	Needle bar crank	1	SM15/64"×28
12	17050	Screw	1	φ2.5×155
13	50WF1-013	Screw	1	
14	92WF1-008	Upper shaft	1	
15	92WF1-009	Upper shaft front bushing	1	
16	50WF1-022	Screw	1	
17	92WF1-010	Upper shaft middle bushing	1	
18		Oil wick	1	
19	92WF1-011	Bearing bushing	1	SM15/64"×28
20	57WF-009	Screw	2	
21	92WF1-033	Upper bearing	1	SM9/32"×28
22	92WF1-012	Balance block	1	SM9/32"×28
23	50WF1-004	Screw	2	
24	92WF1-013	Synchronized pulley assembly	1	
25	92WF1-014	Screw	2	SM15/64"×28
26	92WF1-034	Synchronized belt	1	
27	92WF1-015	Hand wheel	1	φ2×120
28	1WF5-019	Screw	2	
29	92WF3-014	Lift eccentric cam	1	M6
30	21WF1-020	Screw	2	6005-2ZNR
31	92WF3-029	Feed eccentric cam	1	
32	21WF1-020	Screw	2	SM15/64"×28
33	92WF3-030	Retaining block	1	
34	7WF5-017	Screw	2	SM1/4"×40
35	119WF10-003	Synchronizer magnet assembly	2	540-8YU-15
36	92WF1-016	Lower shaft	1	
37	92WF1-017	Lower shaft synchronized pulley assembly	1	SM15/64"×28
38	92WF1-014	Screw	2	
39	92WF1-018	Lower shaft front bushing	1	SM1/4"×40
40	92WF1-019	Lower shaft middle bushing	1	
41	17T5-016	Screw	2	SM1/4"×40
42	92WF1-021	Lower shaft gear	1	
43	2KT5-027	Screw	2	SM11/64"×40
44		Lower shaft bearing	1	
45	119WF1-001	Bearing bushing	1	
46	49WF1-015	Screw	2	
47	7WF5-025	Screw	1	SM1/4"×40
48	92WF3-062	Feed dog lift eccentric cam	1	
49	6K1-017	Screw	2	
50	92WF3-063	Link	1	SM15/64"×28
51	92WF3-064	Eccentric pin	1	
52	2KT5-005	Screw	1	SM1/4"×40
53	92WF3-073	Bearing	1	NSK6004Z
54	92WF3-065	Retaining ring	2	
55	92WF3-066	Bearing cover	1	
56	16WF1-059	Screw	2	
57	119WF10-001	Synchronizer	1	
58	119WF10-002	Screw	2	SM15/64"×28
				SM11/64"×40 K202417

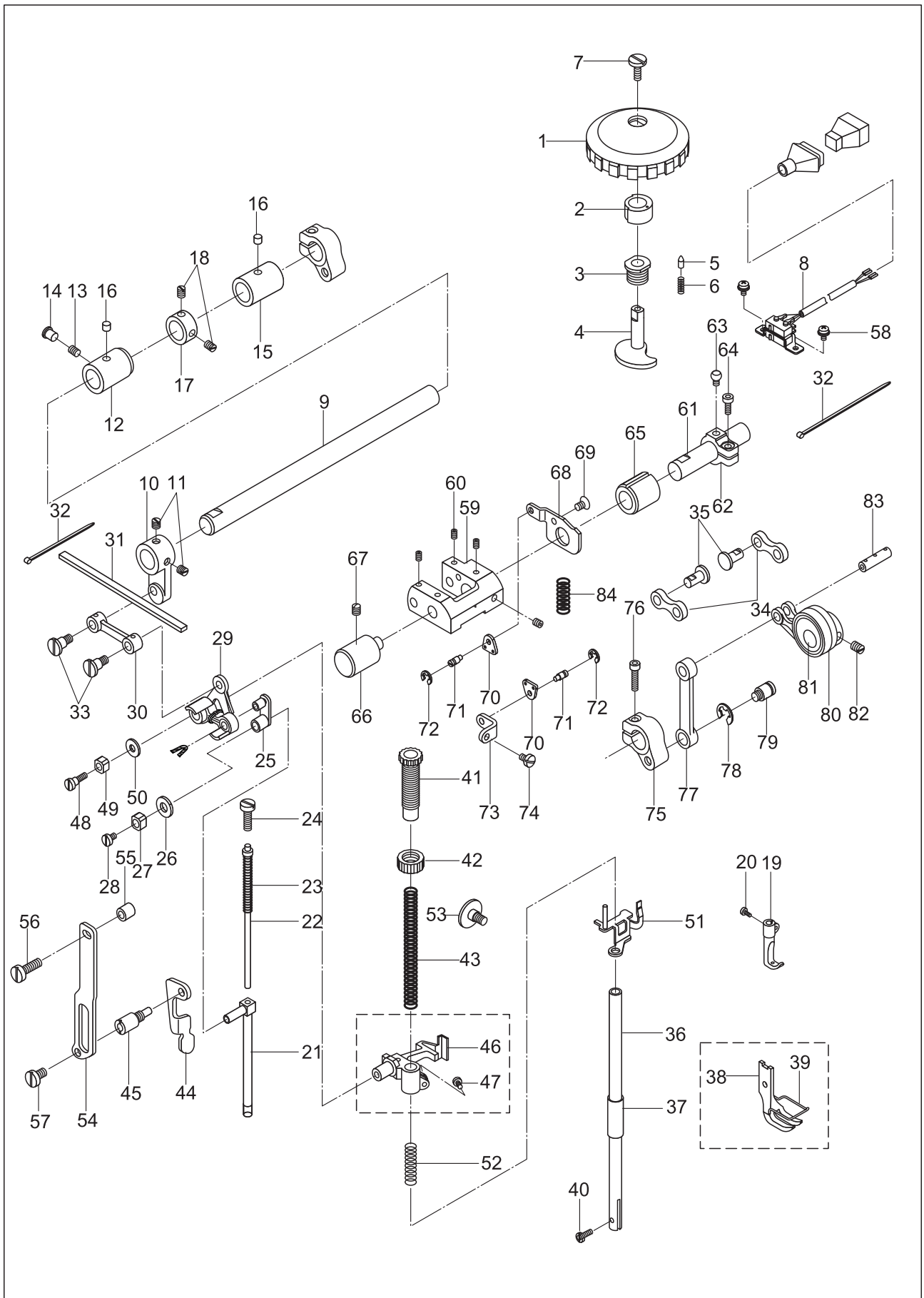
### 3. Needle bar vibrating parts



### 3. Needle bar vibrating parts

NO.	Part Number	Name	Qt.	Remark
1	50WF1-001	Needle bar	1	
2	92WF1-003	Needle bar thread guide	1	
3	92WF1-032	Needle	1	
4	22T2-017	Screw	1	
5	50WF1-003	Needle bar adapter	1	
6		Oil wick	1	
7	22WF3-014	Screw	1	
8	92WF3-001	Vibrating shaft	1	
9	92WF3-002A	Crank	1	
10	92WF3-002B	Crank pin	1	
11	92WF3-070	Screw	2	
12		Oil felt	1	
13	92WF3-003	Spring	1	
14	92WF3-004	Slide block	1	SM1/8"×44
15	92WF3-005	Vibrating shaft front bushing	1	
16	92WF3-006	Vibrating shaft rear bushing	1	
17	92WF3-007	Oil felt	1	SM9/64"×40
18	92WF3-008	Needle bar vibrating frame	1	
19	92WF3-007	Oil felt	1	
20	92WF3-009	Hinge shaft	1	
21	1WF2-019	Screw	1	GB80-85 M8×8
22	92WF3-010	Position plate (1)	1	φ1.5 Length 20
23	21WF1-054	Screw	2	
24	92WF3-011	Position plate (2)	1	
25	1WF1-011	Screw	2	
26	92WF3-012	Driven crank	1	
27	52WF1-050	Screw	1	
28	92WF3-013	Oil felt	1	
29	2KT-001a	Wire	2	
30	50WF3-030	Guide rail	1	
31	1WF1-011	Screw	2	SM15/64"×28
				SM9/64"×40

## 4.Upper feed parts

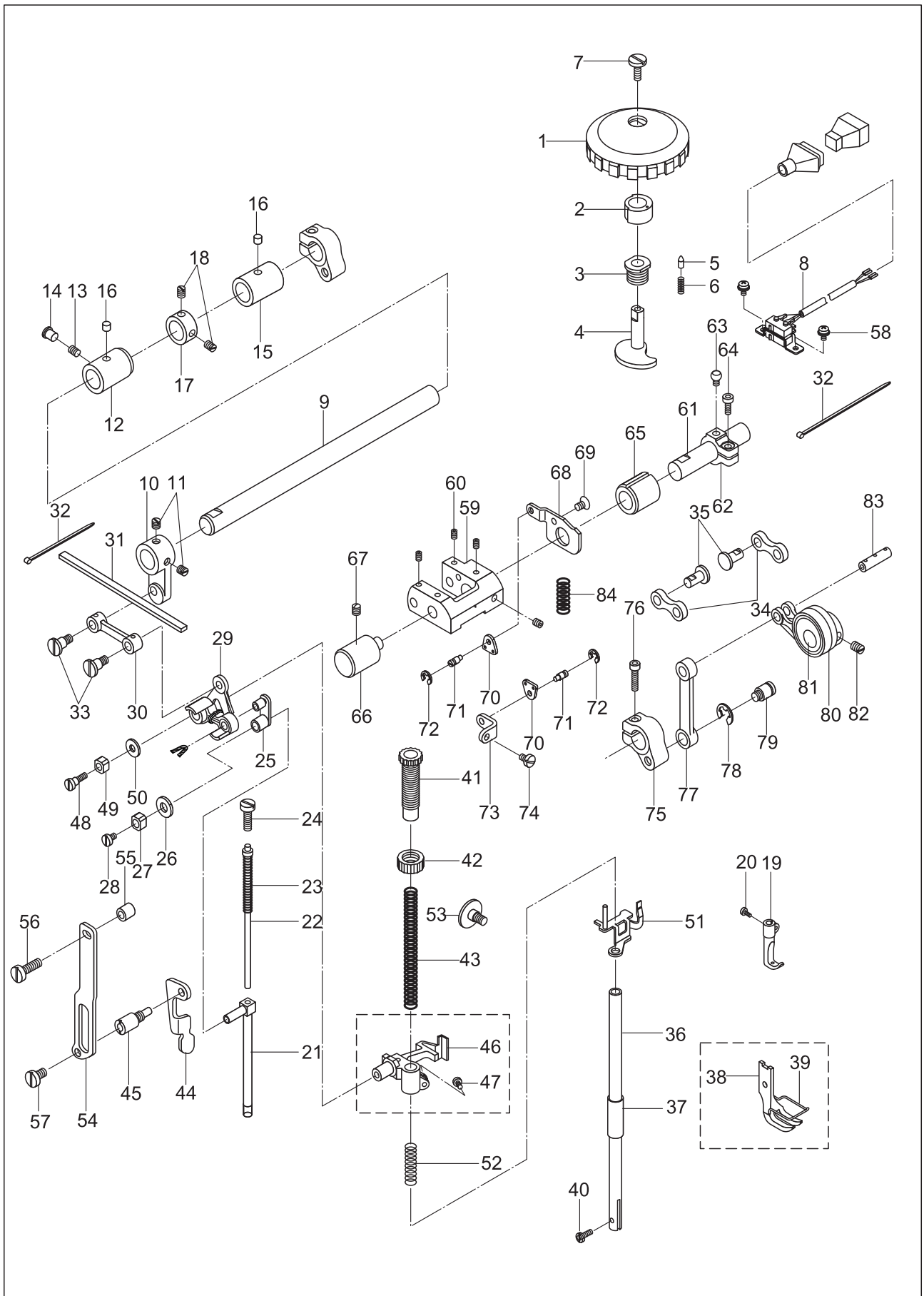




#### 4.Upper feed parts

NO.	Part Number	Name	Qt.	Remark
1	119WF7-017A	Dial	1	
2	119WF7-017B	Dial bushing	1	
3	119WF7-019	Bushing	1	
4	119WF7-018	Dial shaft	1	
5	994131	Pin	1	
6	93WF8-002	Spring	1	
7	302395	Screw	1	
8	119WF7-020	Speed controller assembly	1	
9	92WF3-018	Upper feed shaft	1	
10	92WF3-019	Upper feed crank	1	
11	2KT5-027	Screw	2	SM1/4"×40
12	92WF3-020	Upper feed shaft bushing(left)	1	
13	50WF1-022	Screw	1	SM15/64"×28
14	92WF2-029	Rubber plug	1	
15	92WF3-021	Upper feed shaft bushing(right)	1	
16		Oil felt	2	φ6×10
17	92WF3-022	Collar	1	
18	7WF5-033	Screw	2	SM1/4"×40
19	92WF3-023	Walking foot	1	
20	50WF3-020	Screw	1	SM11/64"×40
21	50WF3-018	Walking foot lifting bar	1	
22	92WF3-024	Spring guide assmbly	1	
23	50WF3-032	Presser spring	1	
24	6K1-048	Screw	1	SM15/64"×28
25	50WF3-027	Link	1	
26	50WF3-028	Oil felt	1	
27	50WF3-029	Slide block	1	
28	17078	Screw	1	SM11/64"×40
29	92WF3-025	Foot lifting plate	1	
30	92WF3-026	Foot lifting link	1	
31	92WF3-027	Oil felt	1	
32	2KT7-001a	Binding cord	2	
33	92WF3-028	Screw	2	
34	119WF7-011	Small link	1	
35	994118	Pin shaft	1	
36	22WF3-005	Presser bar	1	
37	50WF4-001	Presser bar bushing	1	
38	92WF4-001	Presser foot	1	
39	92WF4-002	Finger guard	1	
40	22WF3-014	Screw	1	SM9/64"×40
41	92WF4-003	Screw	1	SM1/2"×28
42	1KT4-002	Nut	1	SM1/2"×28
43	92WF4-023	Spring	1	

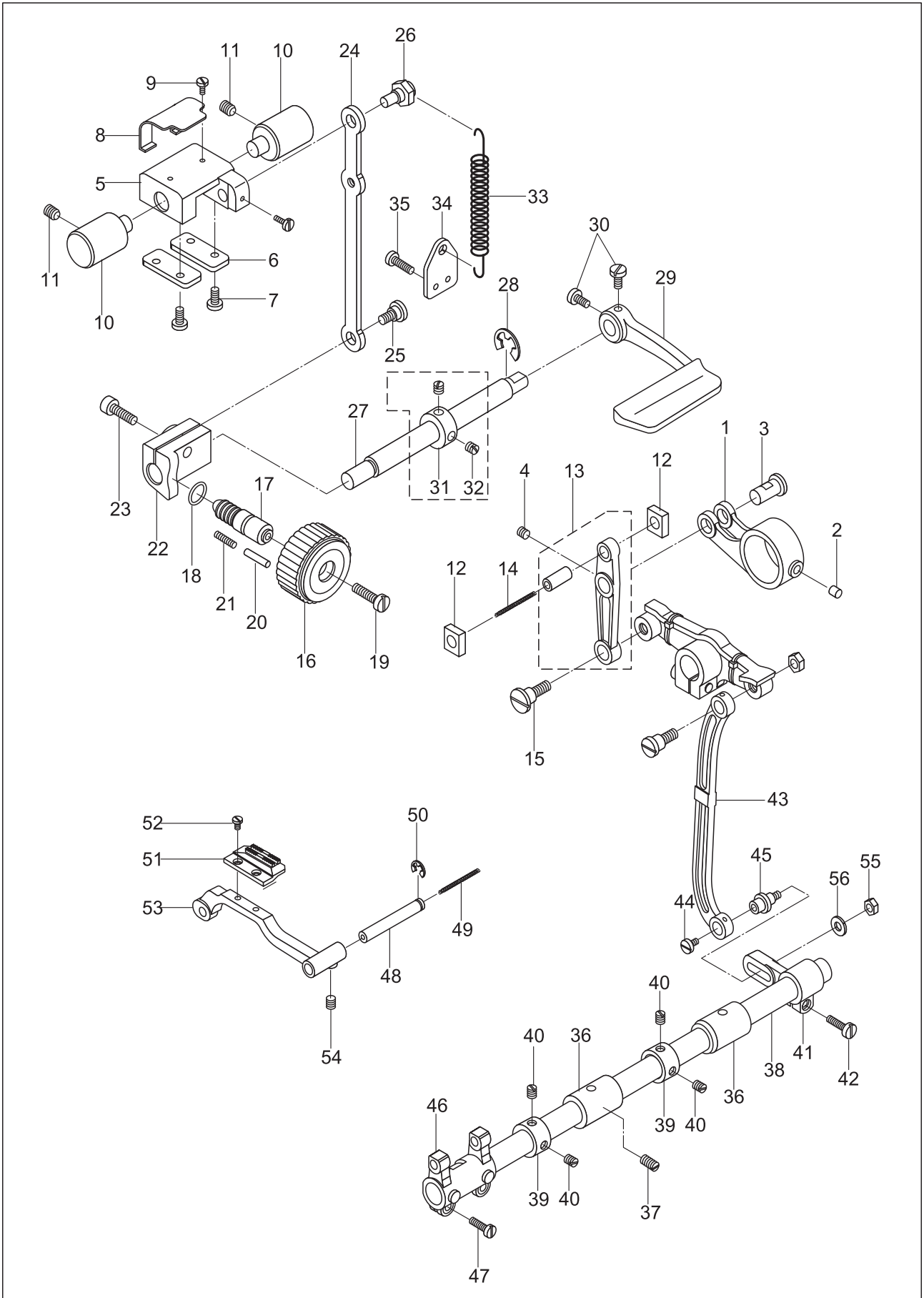
## 4.Upper feed parts



#### 4.Upper feed parts

NO.	Part Number	Name	Qt.	Remark
44	92WF4-004	Presser foot lifting bar	1	
45	92WF4-005	Lifting bar shaft	1	
46	92WF4-006	Releasing bracket	1	
47	1WF1-011	Screw	1	SM11/64"×40
48	92WF4-007	Screw	1	
49	50WF3-029	Slide block	1	
50	92WF4-008	Washer	1	
51	92WF4-009	Releasing plate	1	
52	50WF4-013	Spring	1	
53	50WF4-014	Screw	1	SM1/4"×28
54	92WF4-010	Presser bar guide plate	1	
55	92WF4-011	Washer	1	
56	60WF4-003	Screw (upper)	1	SM15/64"×28
57	52WF3-027	Screw (lower)	1	SM15/64"×28
58		Screw	2	GB/T65 M4×40
59	119WF7-001	Presser foot lifting adjusting bracket	1	
60	6K2-043	Screw	4	
61	119WF7-003	Adjusting bracket shaft	1	
62	119WF7-004	Crank	1	
63	119WF7-005	Screw	1	
64	72WF5-021	Screw	1	
65	119WF7-002	Bushing	1	
66	92WF3-037	Reverse bracket shaft	1	
67	7KT5-021	Screw	1	
68	119WF7-012	Retaining plate	1	
69		Screw	1	GB/T819.2 M5×40
70	119WF7-014	Connecting plate	2	
71	119WF7-015	Screw	2	
72		Retaining ring	2	GB8965 BLACK
73	119WF7-016	Bracket	1	
74	50WF3-089	Bracket screw	1	
75	119WF7-009	Upper feed shaft crank	1	
76	80WF6-025	Screw	1	
77	119WF7-008B	Upper feed shaft crank link	1	
78		Retaining ring	1	GB8968 BLACK
79	119WF7-010	Screw	1	
80	119W7-008A	Link	1	
81	009WR7-007	Needle bearing	1	
82	49WF1-015	Screw	1	
83	119W7-008C	Pin shaft	1	
84	119WF7-013	Spring	1	

## 5.Feed parts

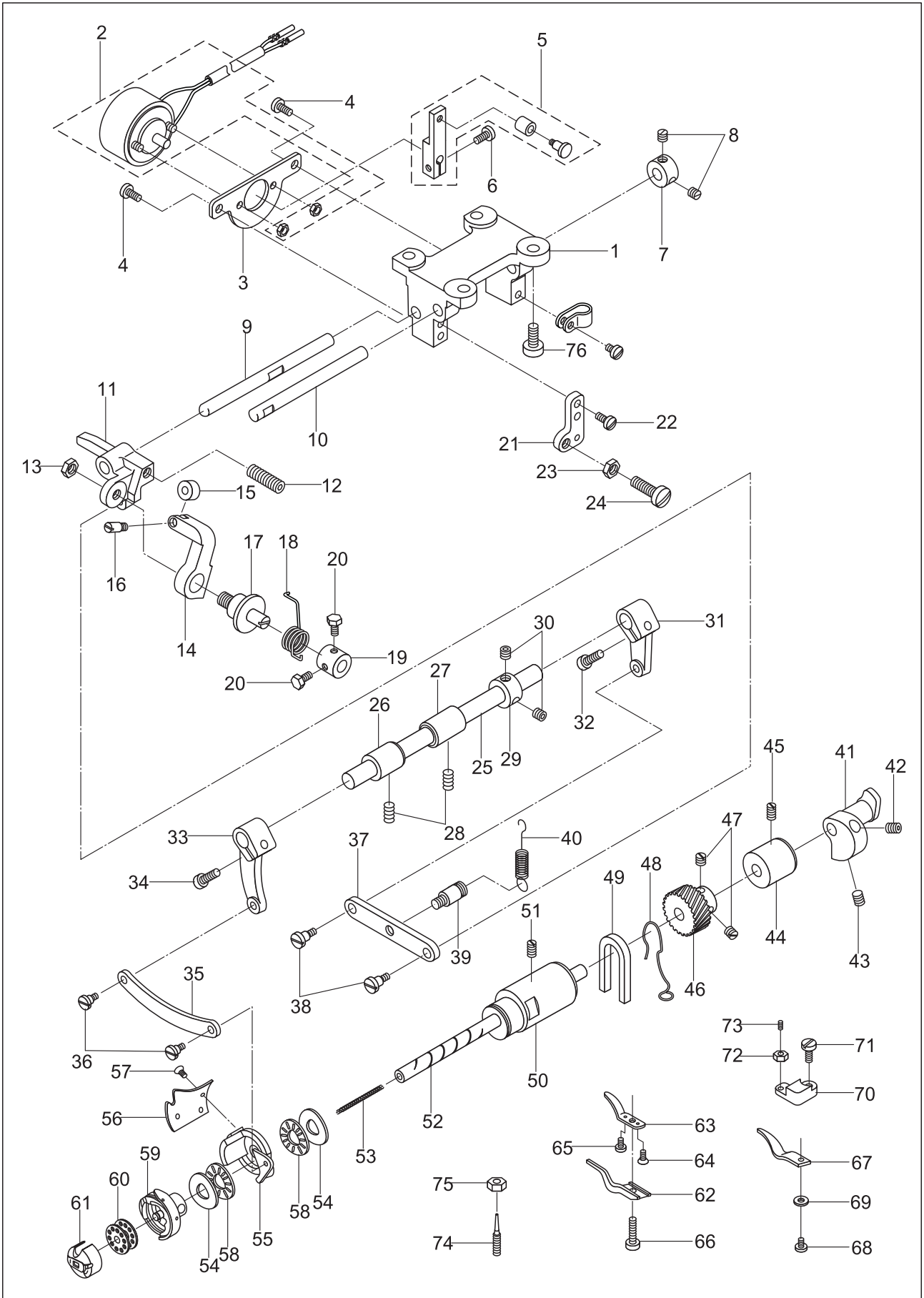


## 5.Feed parts

NO.	Part Number	Name	Qt.	Remark
1	92WF3-031	Feed link	1	
2	92WF3-032	Oil felt	1	
3	92WF3-033	Link pin	1	
4	6K2-043	Screw	1	
5	92WF3-034	Reverse feed bracket	1	
6	92WF3-035	Retaining plate	2	
7	1WF1-011	Screw	4	
8	92WF3-036	Presser plate	1	
9	16WF1-059	Screw	2	M5
10	92WF3-037	Reverse feed bracket shaft	2	
11	1WF5-019	Screw	2	
12	92WF3-038	Slide block	2	SM11/64"×40
13	92WF3-039	Feed vibrating bar assembly	1	
14		Oil wick	1	SM11/64"×40
15	92WF3-040	Screw	1	
16	92WF3-041	Stitch length adjusting dial	1	SM15/64"×28
17	92WF3-042	Bolt	1	
18	92WF3-043	Seal ring	1	
19	92WF3-044	Screw	1	φ1.5 Length 35
20	17WF4-035	Stop pin	1	
21	50WF3-058	Spring	1	
22	92WF3-045	Stitch length holder	1	
23	6K2-024	Screw	1	
24	92WF3-046	Link	1	SM3/16"×28
25	92WF3-047	Screw	1	
26	92WF3-048	Eccentric pin	1	
27	92WF3-049	Reverse feed lever shaft	1	
28	92WF3-071	Retainer	1	M6
29	92WF3-050	Reverse feed lever	1	
30	92WF3-051	Screw	2	
31	92WF3-052	Collar	1	
32	7WF5-033	Screw	2	
33	92WF3-053	Spring	1	GB896-86-9
34	92WF3-054	Spring hook	1	
35	1WF3-009	Screw	2	SM3/16"×28
36	92WF3-021	Feed shaft bushing	2	
37	1WF2-019	Screw	1	SM1/4"×40
38	92WF3-055	Feed shaft	1	
39	92WF3-022	Collar	2	
40	7WF5-033	Screw	4	SM11/64"×40
41	92WF3-057	Crank	1	
42	41WF3-018	Screw	1	SM15/64"×28
43	92WF3-058	Link	1	
44	119WF3-003	Screw	2	
45	119WF3-002	Hinge screw	2	SM1/4"×40
46	92WF3-060	Feed crank	1	
47	1WF3-009	Screw	2	SM3/16"×28
48	92WF3-061	Connecting pin	1	
49		Oil wick	1	
50	92WF3-072	Retainer	1	SM9/32"×28
51	92WF3-067	Feed dog	1	
52	17WF3-002	Screw	2	SM11/64"×40
53	92WF3-068	Feed dog support	1	
54	80WF6-036	Screw	1	φ3 Length 50
55	22WF3-004	Nut	1	GB896-86-5
56	71WF3-058	Washer	1	SM1/8"×44

M5

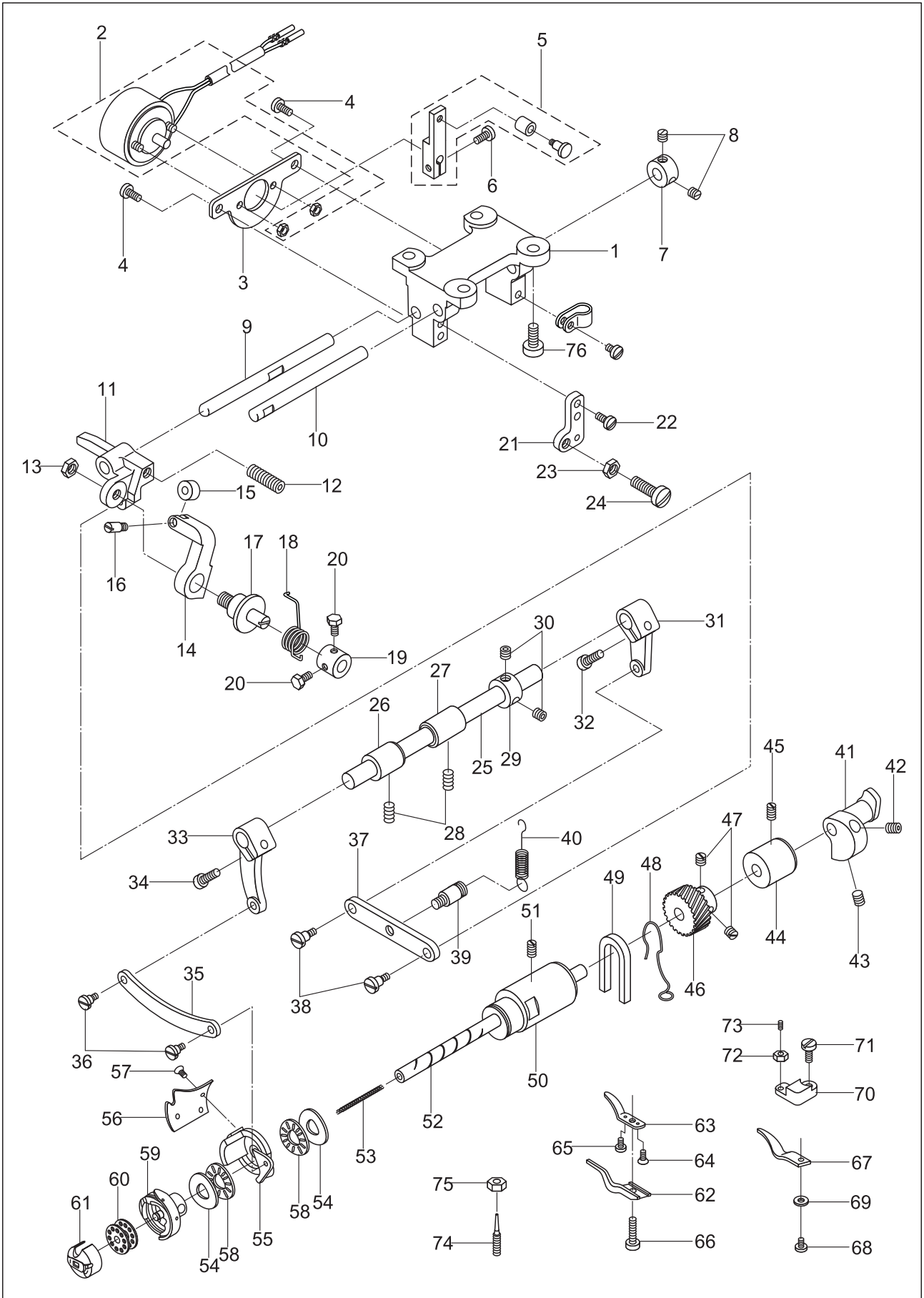
## 6. Threading trimming mechanism



## 6.Threading trimming mechanism

NO.	Part Number	Name	Qt.	Remark
1	119WF6-001	Trimming solenoid base	1	
2	119WF6-002	Trimming solenoid	1	
3	119WF6-003	Solenoid installation plate	1	
4	7WF5-017	Screw	2	
5	119WF6-004	Solenoid crank assembly	1	
6	1WF1-011	Screw	1	
7	119WF6-008	Collar	1	
8	36WF5-012A	Screw	2	
9	119WF6-005	Shaft	1	
10	119WF6-007	Crank shaft	2	
11	119WF6-006	Trimming positioning crank	1	
12		Screw	1	GB/T80 M6×20 BLACK
13	7WF5-001	Nut	1	
14	119WF6-009A	Trimming crank	1	
15	119WF6-009B	Roller	1	
16	119WF6-009C	Screw	1	
17	119WF6-020	Screw	1	
18	119WF6-011	Spring	1	
19	119WF6-012	Collar	1	
20	119WF6-034	Screw	2	
21	119WF6-013	Trimming positioning plate	1	
22	7WF5-017	Screw	1	
23	22WF3-004	Nut	1	
24	60WF4-003	Screw	1	
25	119WF6-015	Trimming shaft	1	
26	119WF6-016	Trimming shaft bushing(left)	1	
27	119WF6-017	Trimming shaft bushing(right)	1	
28	1WF5-019	Screw	1	
29	119WF6-033	Collar	1	
30	36WF5-021	Screw	2	
31	119WF6-021	Trimming shaft crank(right)	1	
32	49WF3-014	Screw	1	
33	119WF6-018	Trimming shaft crank(left)	1	
34	49WF3-014	Screw	1	
35	119WF6-019	Link	1	
36	119WF6-020	Screw	2	
37	119WF6-022	Link	1	
38	119WF6-023	Screw	2	
39	119WF6-024	Screw	1	
40	119WF6-025	Spring	1	
41	119WF6-014	Trimming cam	1	
42	57WF-009	Screw1	1	

## 6. Threading trimming mechanism

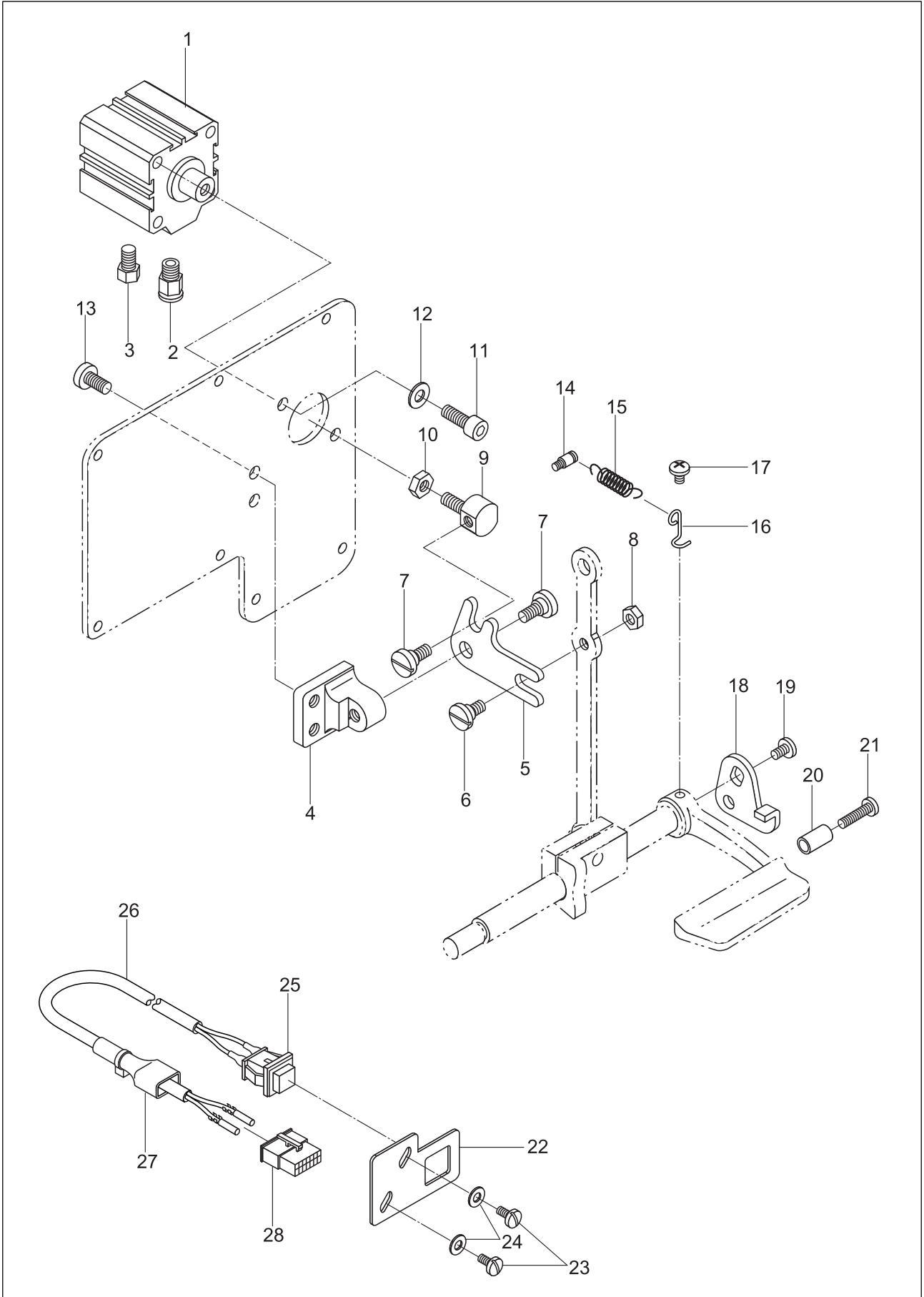




## 6.Lower shaft and rotating hook shaft

NO.	Part Number	Name	Qt.	Remark
43	72WF2-014	Screw2	1	
44	92WF1-027	Hook shaft bushing (right)	1	
45	1WF5-019	Screw	1	
46	92WF1-028	Hook shaft gear	1	
47	7WF5-033	Screw	2	
48	92WF1-026	Lock ring	1	
49	92WF1-025	Oil felt	1	
50	92WF1-027	Hook shaft bushing (left)	1	
51	1WF5-019	Screw	1	SM15/64"×28
52	92WF1-023	Hook shaft	1	
53		Oil wick	1	
54		Washer	1	AS2035
55	119WF6-026	Movable knife bracket	2	
56	119WF6-028	Movable knife	1	
57	119WF6-027	Screw	1	
58	119WF6-030	Bearing	1	
59	92WF1-001	Hook complete	1	
60	33T1-027	Bobbin	1	
61		Bobbin case complete	1	
62	119WF1-004	Bobbin case opener	1	
63	119WF6-031	Fixed knife	1	
64	36WF1-046	Screw1	1	
65	50WF3-082	Screw2	1	
66	17WF3-015	Screw	1	
67	119WF1-005	Thread stop plate	1	
68	50WF2-026	Screw	1	
69	2KT7-009	Washer	1	
70	119WF6-032	Fixed knife adjusting base	1	
71	17WF3-015	Screw	1	
72	52WF2-023	Nut	1	
73	41WF3-011	Screw	1	
74	92WF1-031	Screw	1	
75	50WF3-042	Nut	1	
76	1WF4-027	Screw	4	SM15/64"×28

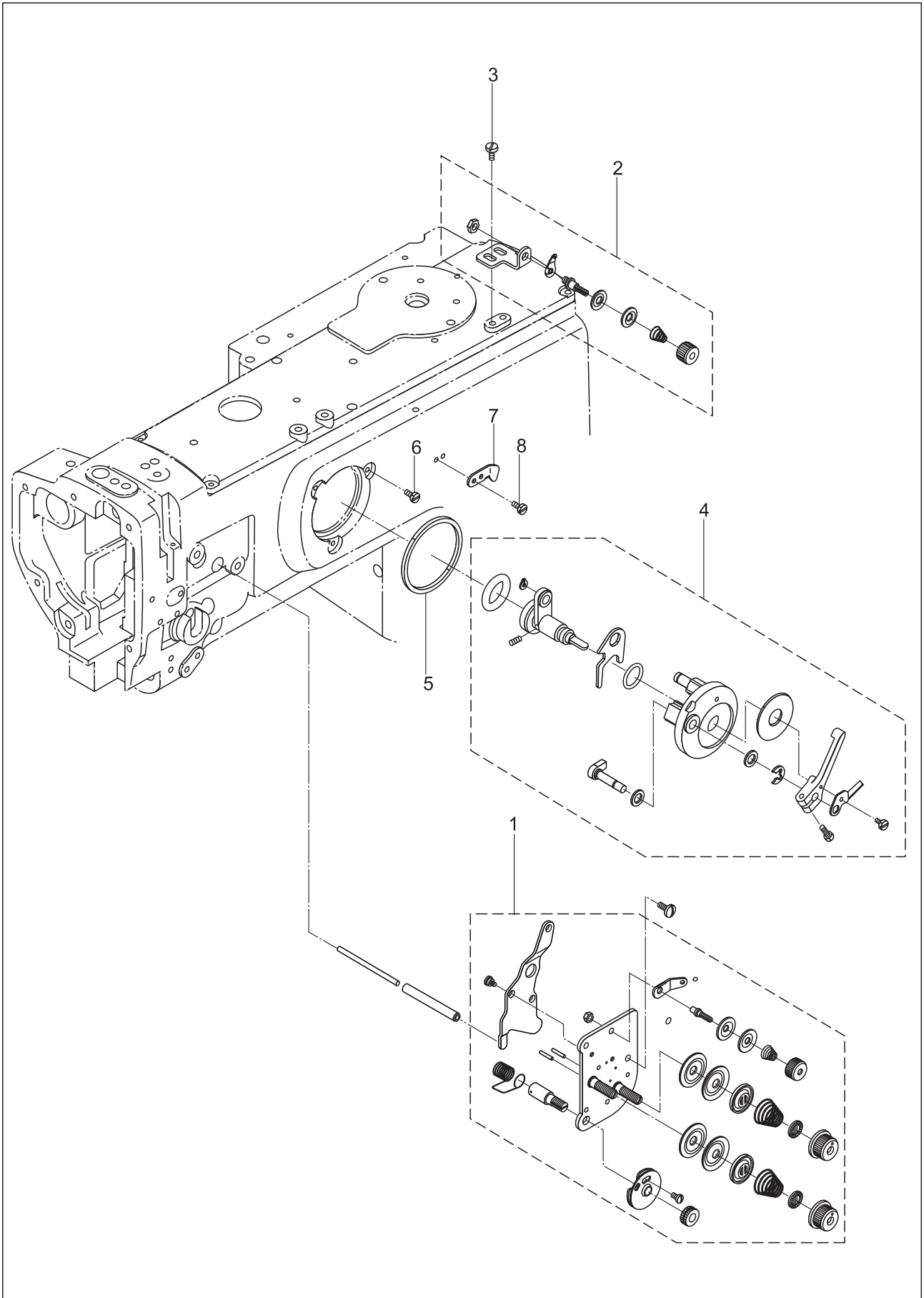
## 7. Automatic reverse stitching mechanism



## 7. Automatic reverse stitching mechanism

NO.	Part Number	Name	Qt.	Remark
1	119WF8-001A	Cylinder	1	
2	119WF8-001C	Joint	1	
3	119WF8-001B	Silence	1	
4	119WF8-004	Auto-reverse driving bracket	1	
5	119WF8-005	Auto-reverse driving plate	1	
6	119WF8-003	Screw	1	
7	119WF8-006	Screw	2	
8	22WF3-004	Nut	1	SM15/64"×28
9	119WF8-002	Joint	1	
10	22T5-011A7	Nut	1	
11	52WF5-003	Screw	4	
12	72WF2-010	Washer	4	
13	36WF1-056	Screw	2	
14	119WF8-011	Screw pin	1	
15	119WF8-008	Spring	1	
16	119WF8-008	Spring hook	1	
17	119WF8-010	Screw	1	
18	119WF8-007	Reverse lever crank	1	
19	22T5-010D3	Screw	1	
20	119WF8-012	Positioning block	1	
21	36WF4-007	Screw	1	
22	119WF8-013	Button supporting plate	1	
23	22WF4-014	Screw	2	
24	2KT7-009	Washer	2	
25	119WF8-019	Reverse sitch button	1	
26	119WF8-016	Wire assembly	1	
27	129WF6-014	Rubber cover	1	
28	119WF8-018	Plug	1	

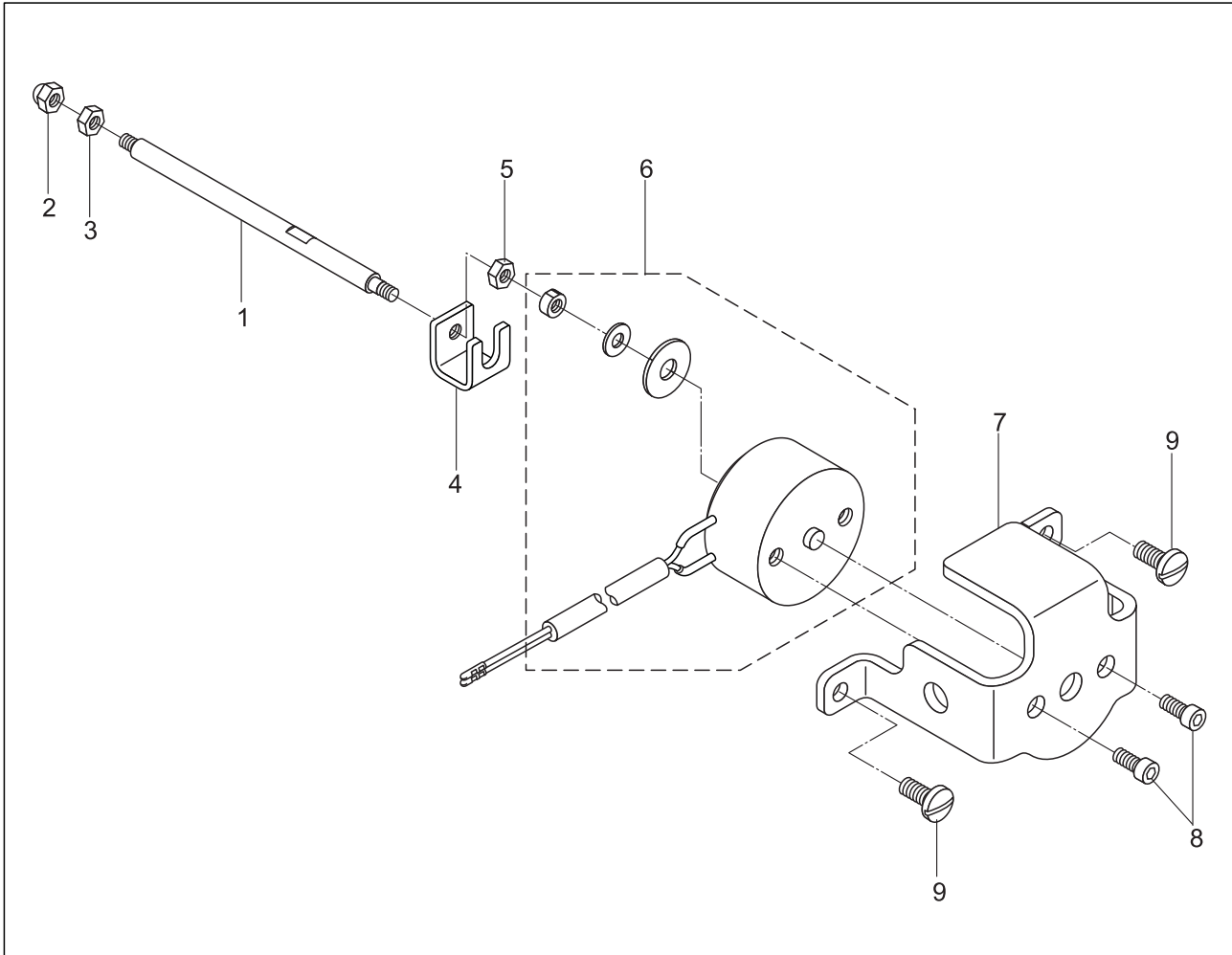
## 8.Thread tension parts



### 8.Thread tension parts

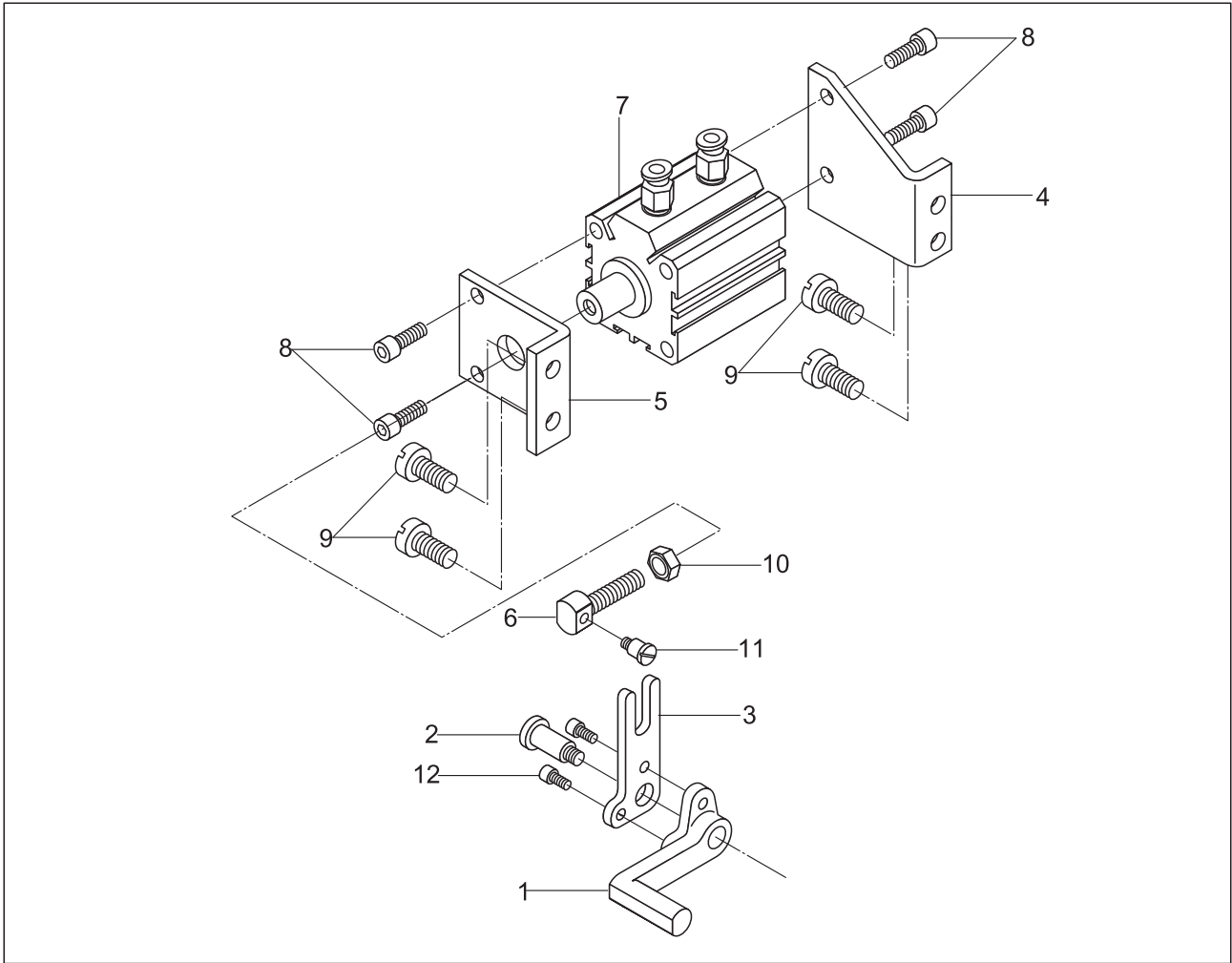
<b>NO.</b>	<b>Part Number</b>	<b>Name</b>	<b>Qt.</b>	<b>Remark</b>
1	119WF2-005	Thread tension plate assembly	1	
2	92WF2-021	Bobbin thread tension assembly	1	
3	13WF2-040	Screw	1	M4
4	92WF2-025	Thread winder assembly	1	
5	92WF2-026	Friction ring	1	
6	92WF2-027	Screw	3	SM11/64"×40
7	92WF2-036	Cutter	1	
8	36WF2-031	Screw	2	

## 9.Thread releasingn parts



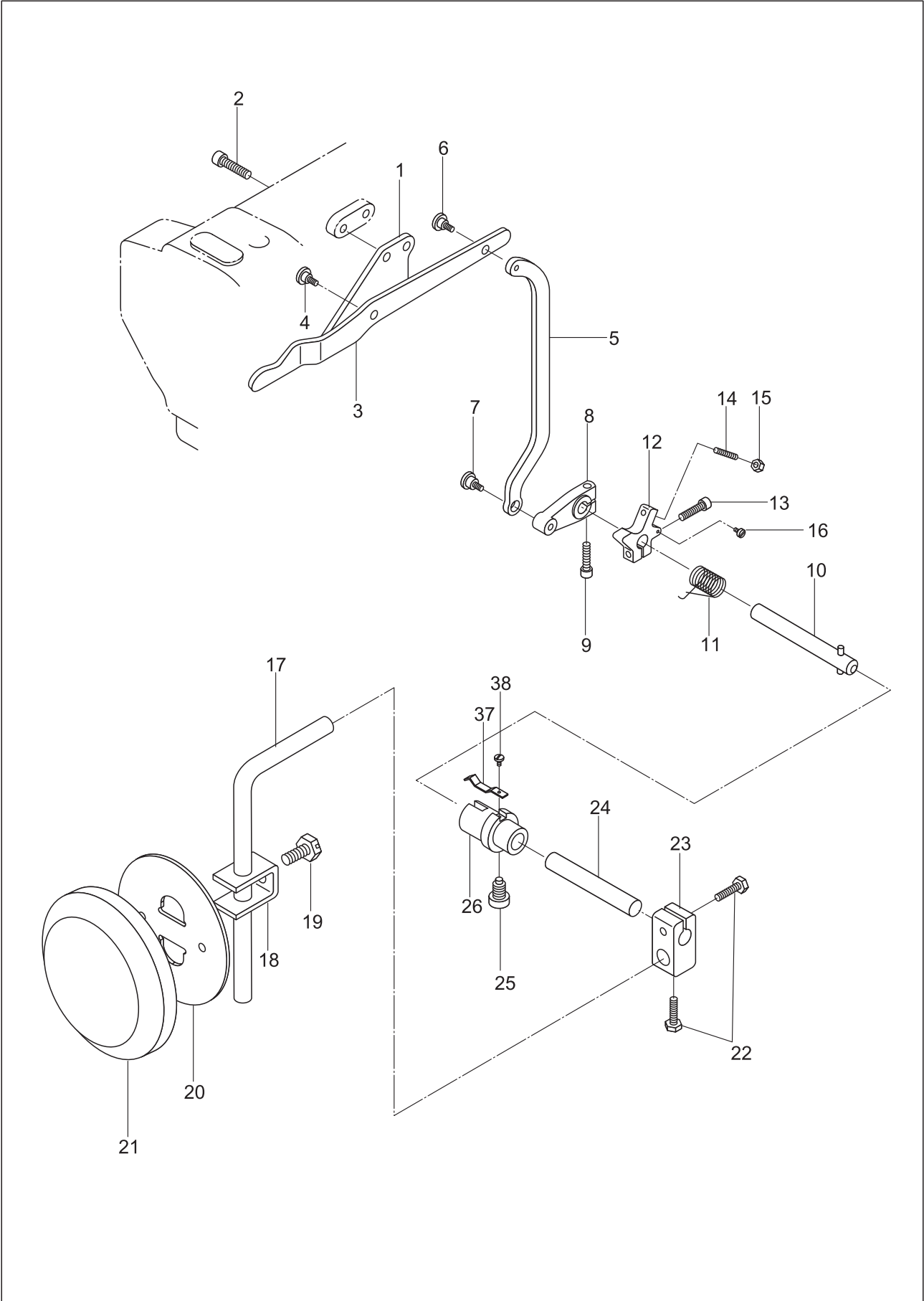
NO.	Part Number	Name	Qt.	Remark
1	119WF9-004	Thread releasing shaft	1	
2		Nut	1	GB923 M4
3	11KT3-021	Nut	1	
4	119WF9-003	Connector	1	
5	11KT3-021	Nut	1	
6	119WF9-001	Solenoid	1	
7	119WF9-002	Solenoid base	1	
8		Screw	2	GB/T70.1 M4"×40
9	7WF5-017	Screw	2	

### 10. Automatic lifter mechanism(-D2T3)



NO.	Part Number	Name	Qt.	Remark
1	176WF4-001	Crank	1	
2	176WF4-002	Screw	1	
3	176WF4-003	Driving plate	1	
4	176WF4-004	Cylinder support 1	1	
5	176WF4-005	Cylinder support 2	1	
6	176WF4-006	Joint	1	
7	176WF4-007	Cylinder	1	
8		Screw	4	
9	13WF2-045	Screw	4	
10		Nut	1	
11	119WF8-003	Screw	1	
12	176WF4-002	Screw	2	

# 11.Knee lifter mechanism(-D2T1)

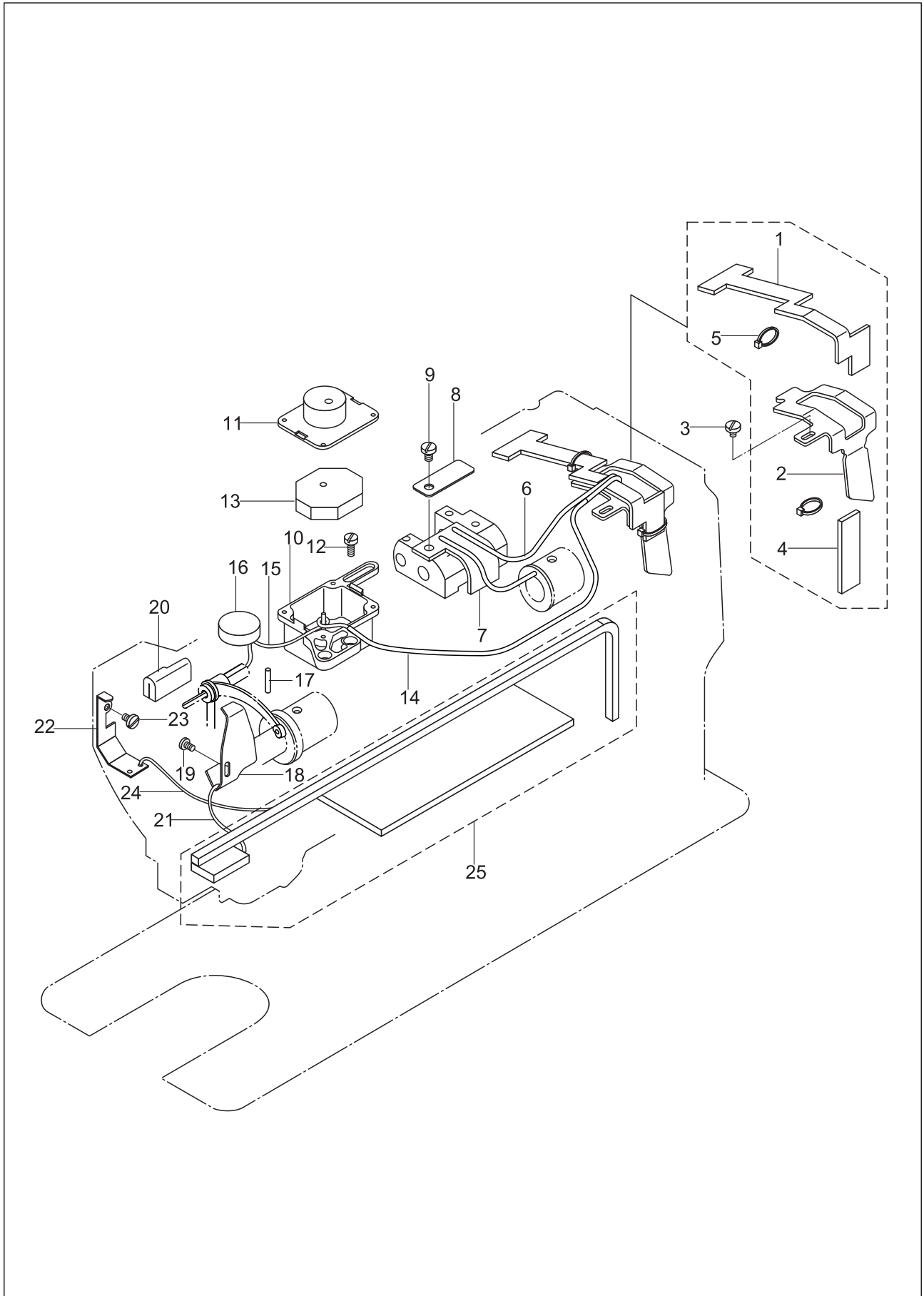




### 11.Knee lifter mechanism(-D2T1)

NO.	Part Number	Name	Qt.	Remark
1	92WF4-012	Knee control lever support	1	
2	6K2-024	Screw	2	
3	92WF4-013	Knee control lever	1	
4	92WF4-014	Screw	1	
5	92WF4-015	Knee control connecting rod	1	
6	92WF4-016	Screw	1	
7	92WF4-014	Screw	1	
8	94WF4-017	Crank	1	
9	80WF6-025	Screw	1	
10	92WF4-018	Knee control revolving shaft	1	
11	92WF4-019	Spring	1	
12	92WF4-020	Position block	1	M6
13	80WF6-025	Screw	1	
14	92WF4-022	Screw	1	SM1/4"×40
15	13WF3-074	Nut	1	
16	92WF4-021	Screw	1	SM11/64"×40
17	22T9-003B2	Knee control bell bent bar	1	SM1/4"×40
18	22T9-003B6	Bell bracket	1	
19	22T9-003B7	Screw	1	M5
20	22T9-003B5	Knee control bell	1	
21	22T9-003B8	Cushion	1	
22	60WF6-007	Screw	2	
23	60WF6-008	Bell bent bar adapter	1	M5
24	60WF6-009	Knee control connecting bar	1	GB77-85 M5×25
25	17WF2-026B	Screw	1	M5
26	60WF6-010	Connecting bushing	1	SM9/64"×40
27	60WF6-011	Spring	1	
28	60WF1-002	Screw	1	
				SM5/16"×24

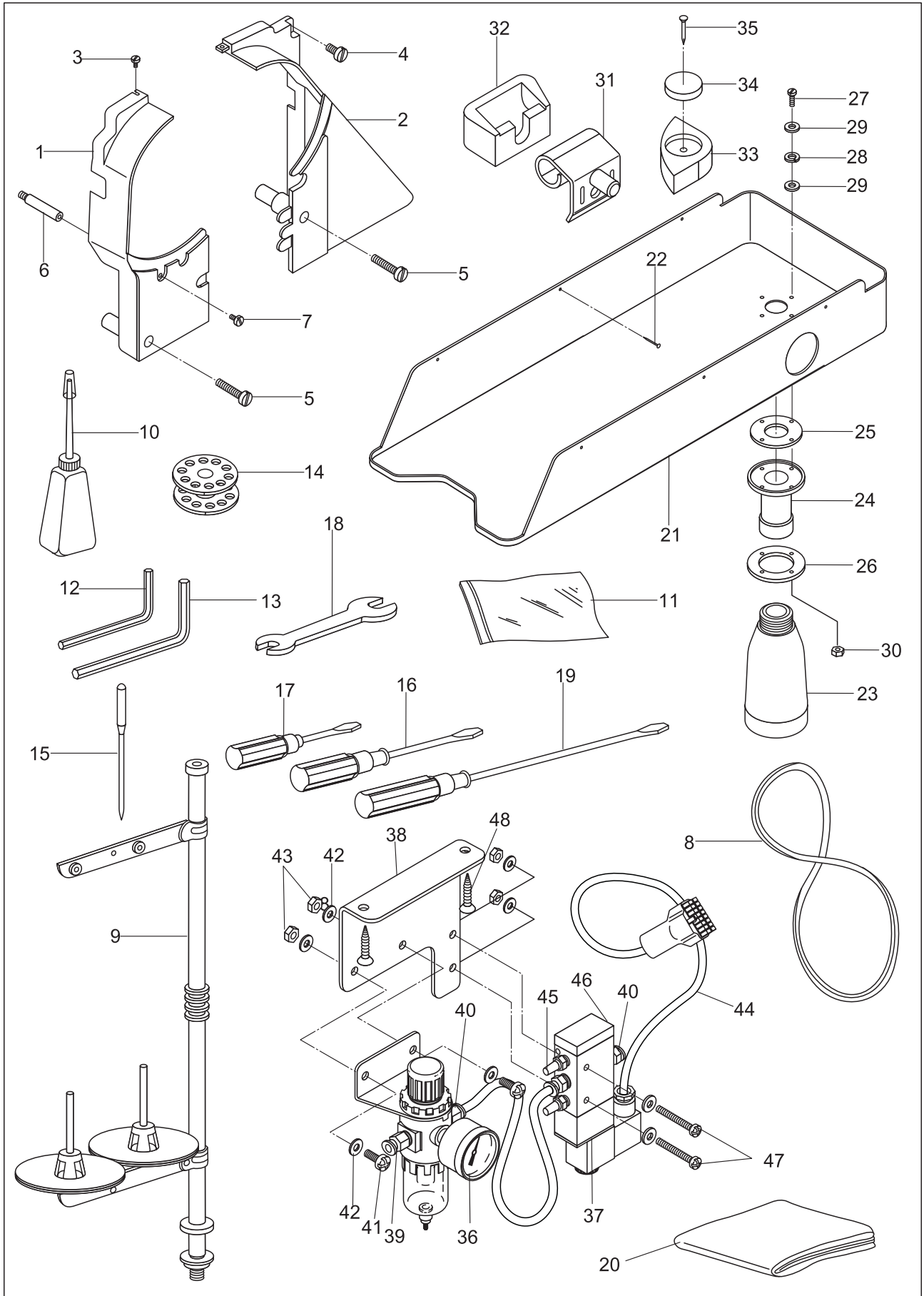
## 12.Lubrication



## 12.Lubrication

NO.	Part Number	Name	Qt.	Remark
1	92WF5-001	Oil felt	1	
2	92WF5-002	Oil felt support	1	
3	36WF1-031D	Screw	1	
4	92WF5-003	Small oil felt	1	
5	2KT7-001a	Binding cord	3	
6		Oil wick	1	
7	92WF5-004	Oil felt	1	
8	92WF5-005	Felt presser plat	1	
9	42WF2-008	Screw	2	
10	92WF5-006	Oil pot	1	
11	92WF5-007	Oil pot cover	1	
12	21WF3-026	Screw	2	SM11/64"×40
13	92WF5-008	Oil felt	2	
14		Oil tube	1	
15		Oil wick	1	φ2×190
16	92WF5-009	Oil felt 1	1	
17	92WF5-010	Oil felt 2	1	
18	92WF5-011	Oil retaining plate	1	SM11/64"×40
19	16WF1-059	Screw	1	
20	92WF5-012	Oil felt	1	
21		Oil wick	1	SM11/64"×40
22	92WF5-013	Oil retaining plate	1	
23	36WF1-031D	Screw	1	φ3× φ5×180
24		Oil wick	1	φ2×380
25	92WF5-014	Oil felt assembly	1	
				SM9/64"×40
				φ2×250
				SM11/64"×40
				φ2×250

### 13. Accessories(-D2T1)



### 13.Accessories(-D2T1)

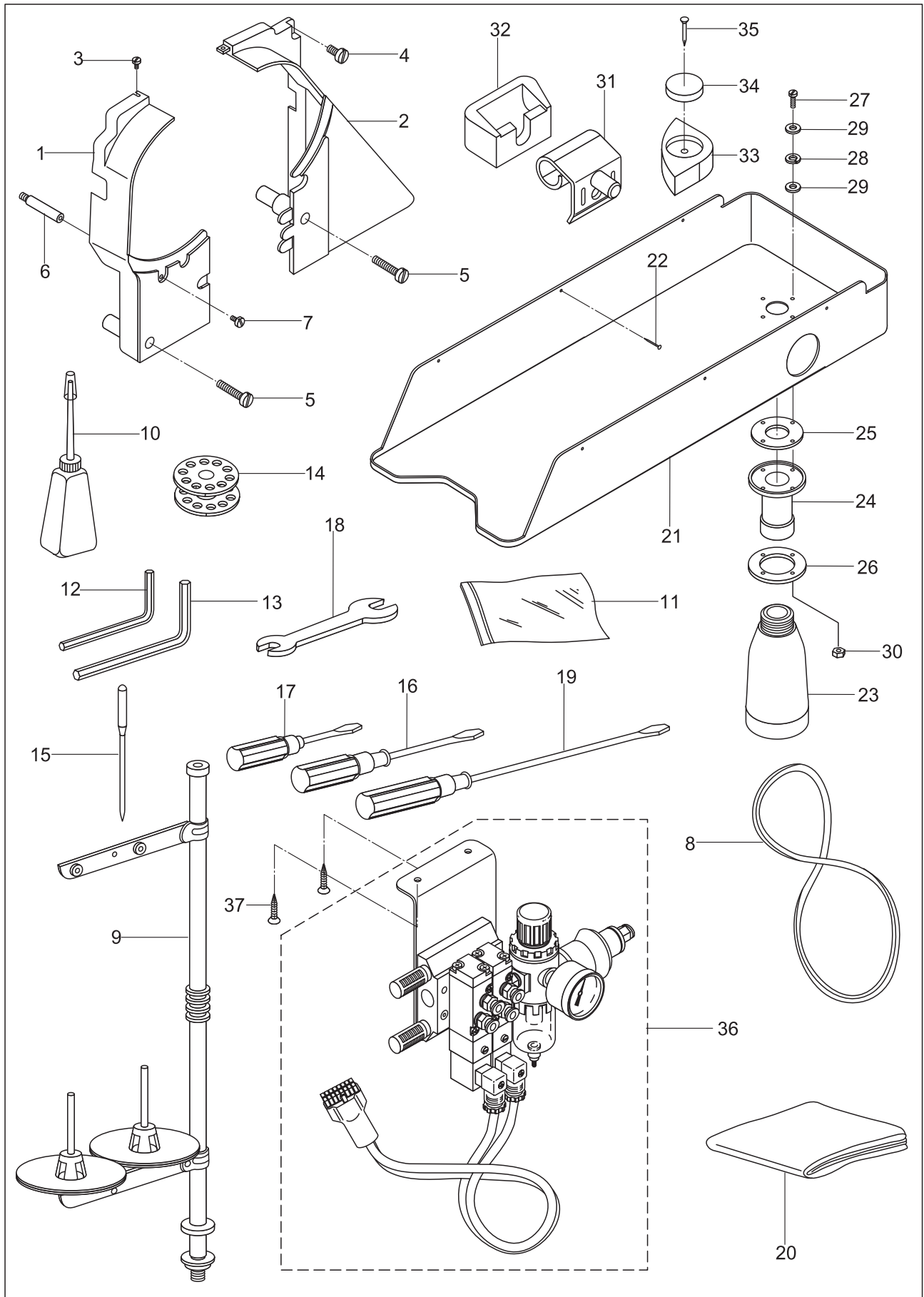
NO.	Part Number	Name	Qt.	Remark
1	92WF6-013A	Safety guard 1	1	
2	92WF6-013B	Safety guard 2	1	
3	2KT6-012	Screw	1	
4	21WF3-012	Screw 1	1	
5	1WF2-060	Screw 2	2	
6	92WF6-016	Column	1	
7	42WF2-008	Screw	1	
8		V-belt	1	
9	33TF-019	Spool stand	1	
10	33TF-011	Small oil pot	1	
11	33TF-010	Parts bag	2	
12	1F-010	Spanner	1	SM11/64"×40
13	1F-011	Spanner	1	SM15/64"×28
14	33T1-027	Bobbin	6	SM15/64"×28
15		Needle	3	
16	33TF-013	Screwdriver (medium)	1	SM11/64×40
17	33TF-014	Screwdriver (small)	1	M42
18		Double ended spanner	1	
19	33TF-012	Screwdriver (big)	1	
20	13F-002	Machine head cover	1	
21	92WF6-017	Oil reservoir	1	S=2.5MM
22		Screw	6	S=3MM
23	92WF6-027	Oil pot	1	
24	92WF6-018	Adapter	1	DP×17 23#
25	92WF6-019	Seal ring	1	
26	92WF6-020	Presser plate	1	
27		Connecting screw	4	9×10
28		Spacer	4	
29	92WF6-023	Seal spacer	8	
30		Connecting nut	4	
31	71WF5-009	Connecting hook assembly	2	SG1162-79 长22MM
32	71WF5-010	Rubber cushion	2	
33	92WF6-025	Rubber cushion	4	
34	92WF6-026	Oil felt	4	
35	13F-006	Screw	4	
36	93WF22-010	Integrator	1	GB818-85 M3×14
37	119WF1-006	Solenoid valve assembly	1	GB848-85 M3
38	23WF5-005	Setting plate	1	
39	119WF11-003	Joint	1	GB170-86 M3
40	119WF11-004	Joint	3	
41		Screw	2	
42		Washer	8	
43		Nut	4	
44	119WF11-008	Connector assembly	1	GB349-88 1
45	119WF11-005	Silence	2	
46	119WF11-007	Plug	1	GB100 3×16
47		Screw	2	
48		Screw	2	

GB/T818 M4×12

GB/T954

GB/T41 M4

# 14. Accessories (-D2T3)



### 14.Accessories(-D2T3)

NO.	Part Number	Name	Qt.	Remark
1	92WF6-013A	Safety guard 1	1	
2	92WF6-013B	Safety guard 2	1	
3	2KT6-012	Screw	1	
4	21WF3-012	Screw 1	1	
5	1WF2-060	Screw 2	2	
6	92WF6-016	Column	1	
7	42WF2-008	Screw	1	
8		V-belt	1	
9	33TF-019	Spool stand	1	
10	33TF-011	Small oil pot	1	
11	33TF-010	Parts bag	2	
12	1F-010	Spanner	1	SM11/64"×40
13	1F-011	Spanner	1	SM15/64"×28
14	33T1-027	Bobbin	6	SM15/64"×28
15		Needle	3	
16	33TF-013	Screwdriver (medium)	1	SM11/64×40
17	33TF-014	Screwdriver (small)	1	M42
18		Double ended spanner	1	
19	33TF-012	Screwdriver (big)	1	
20	13F-002	Machine head cover	1	
21	92WF6-017	Oil reservoir	1	S=2.5MM
22		Screw	6	S=3MM
23	92WF6-027	Oil pot	1	
24	92WF6-018	Adapter	1	DP×17 23#
25	92WF6-019	Seal ring	1	
26	92WF6-020	Presser plate	1	
27		Connecting screw	4	9×10
28		Spacer	4	
29	92WF6-023	Seal spacer	8	
30		Connecting nut	4	
31	71WF5-009	Connecting hook assembly	2	SG1162-79 长22MM
32	71WF5-010	Rubber cushion	2	
33	92WF6-025	Rubber cushion	4	
34	92WF6-026	Oil felt	4	
35	13F-006	Screw	4	
36	93WF22-010	Integrator & solenoid valve assmby	1	GB818-85 M3×14
37	119WF1-006	Solenoid valve assembly	2	GB848-85 M3
				GB170-86 M3
				GB349-88 1
				GB100 3×16

# CONTENT

## Operation Instruction

1. Brief introduction.....	1
2. Main specifications.....	1
3. Installation.....	1
4. Installing the oil box.....	2
5. Adjusting the tension of the belt.....	2
6. Installing the belt cover.....	2
7. Lubrication.....	3
8. Installing the needle.....	3
9. Threading the bobbin thread.....	4
10. Installing the rotating hook body.....	4
11. Installing the winding guider.....	4
12. Winding the bobbin thread.....	4
13. Threading .....	5
14. Adjusting the stitch length.....	5
15. Adjusting the thread tension.....	5
16. Adjusting the thread take-up spring.....	6
17. Presser foot lifter.....	6
18. Adjusting the pressure of the presser foot.....	6
19. Relationship between needle and rotating hook.....	6
20. Adjusting the alternating amount of presser foot.....	7
21. Sewing speed list.....	7
22. Troubleshooting.....	7

## Parts Manua

1. Arm and bed.....	8-9
2. Upper shaft and thread take-up mechanism.....	10-11
3. Needle bar vibrating parts.....	12-13
4. Upper feed parts.....	14-17
5. Feed mechanism.....	18-19
6. Thread trimming mechanism.....	20-23
7. Automatic reverse stitching mechanism.....	23-25
8. Thread tension parts.....	26-27
9. Thread releasing parts.....	28
10. Automatic lifter mechanism(-D2T3).....	29
11. Knee lifter mechanism (-D2T1).....	30-31
12. Lubrication.....	32-33
13. Accessories(-D2T1).....	34-35
13. Accessories(-D2T3).....	36-37